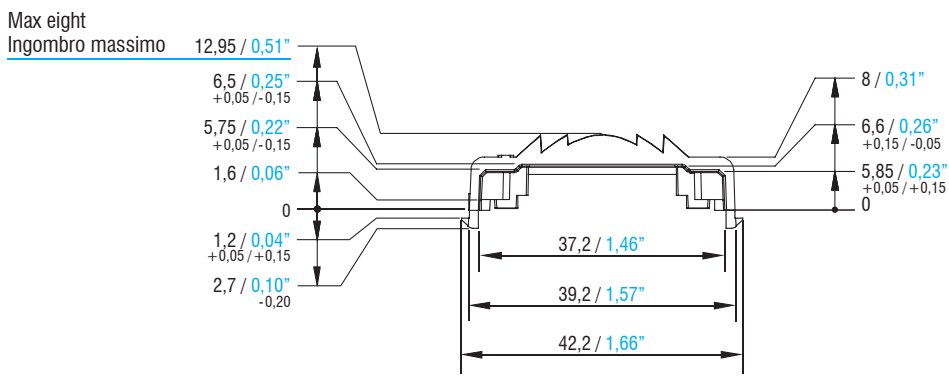
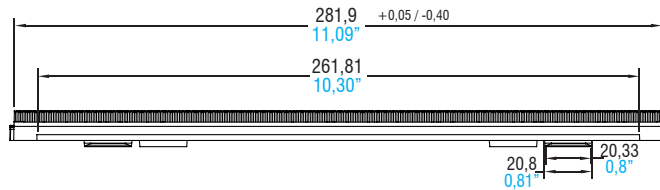
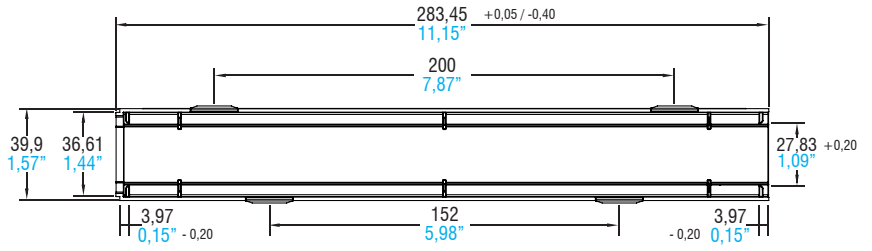




(Weight/Peso 2,15 oz. / gr. 61)



## 4

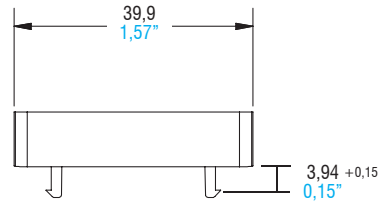
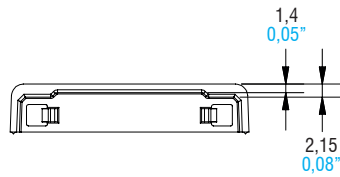
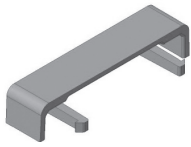
LENSES & REFLECTORS



Article Articolo	LINEA CLIP	LINEA CLIP	LINEA CLIP	LINEA CLIP
Beam Angle Angolo di orientamento	30°	60°	90°	20° ASYM
Code Codice	468780231	468780232	468780233	468780234
Polar distribution Distribuzione polare				

Article Articolo	LINEA CLIP
Beam Angle Angolo di orientamento	±20° Double asymmetric ±20° Doppia asimmetrica
Code Codice	468780235
Polar distribution Distribuzione polare	

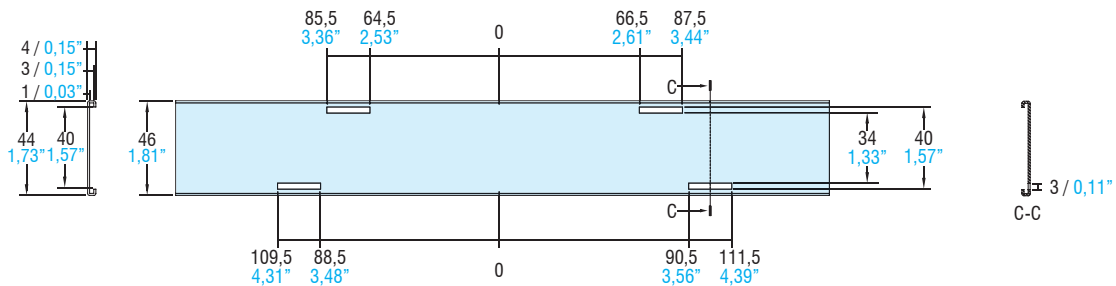
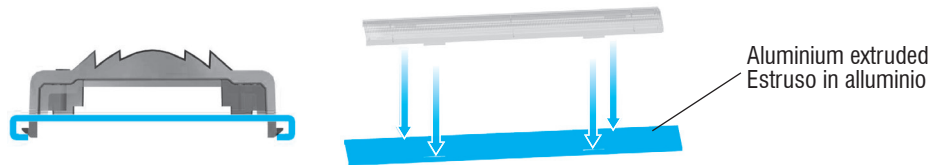
## Lenses



Article - Articolo	Code - Codice
Caps for lens Linea Clip	468780236

The cap can be used as a side closure or as a spacer between lenses to obtain the desired length.  
Tappo utilizzabile come chiusura laterale e come distanziale tra una lente e l'altra per ottenere la lunghezza desiderata.

### Assembly instruction Riferimento per montaggio



### Technical notes for Optics

- Uniform light distribution
- Low UGR
- Ideal for residential, office, retail and industrial lighting
- Material: Optical Grade PMMA 8N
- Dimensions (LxWxH): 283x40x13 mm
- Max allowed temperature: -40...90°C
- Snap-in fixation
- Packaging unit: 200 pcs

### Note tecniche per le Ottiche

- Distribuzione di luce uniforme
- Basso indice di abbagliamento
- Ideali per illuminazione residenziale, uffici, spazi commerciali e industriali
- Materiale: Optical Grade PMMA 8N
- Dimensioni (LxWxH): 283x40x13 mm
- Temperatura massima: -40...90°C
- Fissaggio a clip
- Confezione da 200 pezzi



For additional technical informations see [www.tci.it](http://www.tci.it)