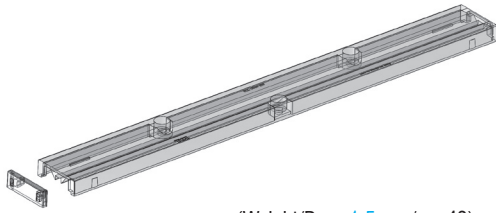
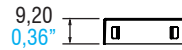
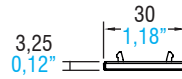
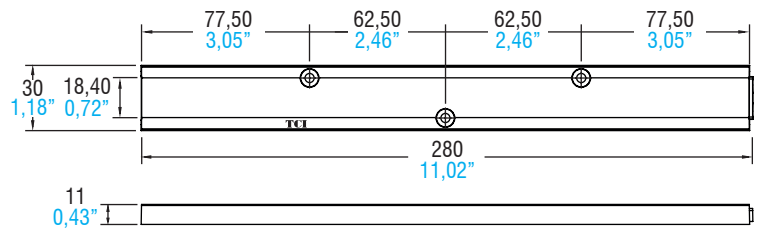


Lenses

Made in Italy



(Weight/Peso 1,5 oz. / gr. 43)



4



LENSES & REFLECTORS

Article Articolo	LINEA BOXED	LINEA BOXED	LINEA BOXED	LINEA BOXED
Beam Angle Angolo di orientamento	30°	60°	90°	Double asymmetric Doppia asimmetrica
Code Codice	468780147	468780148	468780149	468780151
Polar distribution Distribuzione polare				

Article - Articolo	Code - Codice
Caps for lens Linea Boxed	488787434

Technical notes for Optics

- Uniform light distribution
- High efficiency
- Ideal for residential, office, retail and industrial lighting
- Material: Optical Grade PMMA 8N
- Dimensions (LxWxH): 280x30x11 mm
- Max allowed temperature: -40...90°C
- Fixing with flat head screws. Tightening torque: 0,48 Nm
- Packaging unit: 250 pcs

Note tecniche per le Ottiche

- Distribuzione di luce uniforme
- Alta efficienza
- Ideali per illuminazione residenziale, uffici, spazi commerciali e industriali
- Materiale: Optical Grade PMMA 8N
- Dimensioni (LxWxH): 280x30x11 mm
- Temperatura massima: -40...90°C
- Fissaggio tramite viti a testa piatta. Coppia di serraggio: 0,48 Nm
- Confezione da 250 pezzi



For additional technical informations see www.tci.it