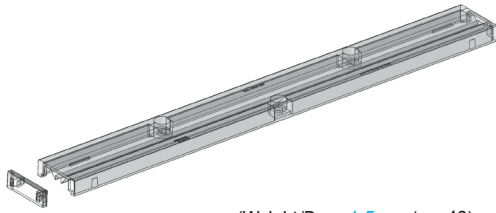
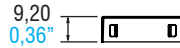
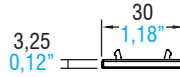
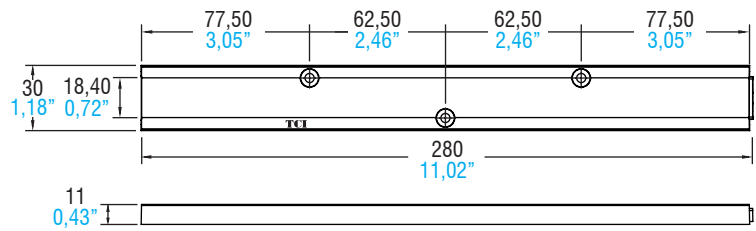


Lenses

Made in Italy



(Weight/Peso 1,5 oz. / gr. 43)



4



LENSES & REFLECTORS

| Article Articolo | LINEA BOXED | LINEA BOXED | LINEA BOXED | LINEA BOXED |
|--|-------------|-------------|-------------|---|
| Beam Angle Angolo di orientamento | 30° | 60° | 90° | Double asymmetric Doppia asimmetrica |
| Code Codice | 468780147 | 468780148 | 468780149 | 468780151 |
| Polar distribution Distribuzione polare | | | | |

| Article - Articolo | Code - Codice |
|------------------------------|---------------|
| Caps for lens Linea Boxed | 488787434 |

Technical notes for Optics

- Uniform light distribution
- High efficiency
- Ideal for residential, office, retail and industrial lighting
- Material: Optical Grade PMMA 8N
- Dimensions (LxWxH): 280x30x11 mm
- Max allowed temperature: -40...90°C
- Fixing with flat head screws. Tightening torque: 0,48 Nm
- Packaging unit: 250 pcs

Note tecniche per le Ottiche

- Distribuzione di luce uniforme
- Alta efficienza
- Ideali per illuminazione residenziale, uffici, spazi commerciali e industriali
- Materiale: Optical Grade PMMA 8N
- Dimensioni (LxWxH): 280x30x11 mm
- Temperatura massima: -40...90°C
- Fissaggio tramite viti a testa piatta. Coppia di serraggio: 0,48 Nm
- Confezione da 250 pezzi



For additional technical informations see www.tci.it