

Direct current electronic drivers  
Alimentatori elettronici in corrente continua

Made in Italy 

constant CURRENT constant VOLTAGE

DAMP LOCATION UL-CLASS2 CSA-LVLE EN EC 05 KEMA EUR PS JET CCC 100 M M SELV 60V

RIPPLE FREE



1-2kV DIFF. 2kV COMM. SAFETY PROTECTIONS

**Rated Voltage**  
Tensione Nominale  
100 ÷ 127 V<sup>(3)</sup>  
100 ÷ 240 V

**Frequency**  
Frequenza  
50/60 Hz

**AC Operation range**  
Tensione di utilizzo AC  
90 ÷ 264 V

**DC Operation range**  
Tensione di utilizzo DC  
(see page info15)  
176 ÷ 264 V

**Power**  
Potenza  
0 ÷ 8 W

**Output current ripple**  
≤ 3%<sup>(1)</sup>

**Reference Norms**  
Norme di riferimento:  
CSA C22.2 no. 223<sup>(3)</sup>  
EN 50172 (VDE 0108)  
EN 55015  
EN 61000-3-2  
EN 61000-3-3  
EN 61347-1  
EN 61347-2-13  
EN 61547  
EN 62384  
UL 1310<sup>(3)</sup>  
UL 8750<sup>(3)</sup>  
VDE 0710-T14

**Max. pcs for CB B16A**  
(see page info17)  
50 pcs

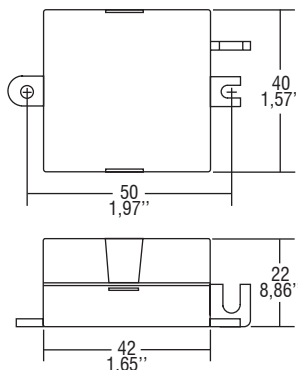
**In rush current**  
20A 170µsec

Article Articolo	Code Codice	P out W	V out DC	I out DC	V out max.	ta °C	tc °C	λ max. Power Factor	η max. Efficiency <sup>(1)</sup>
DC 3W 125mA STM/U	122814	3	2...23	125 mA cost.	24	-25...+60	75	0,6 C	70
DC 6W 150mA STM/U <sup>(3)</sup>	122799	6	2...40	150 mA cost.	44	-25...+55	75	0,6 C	70
DC 6W 250mA STM/U <sup>(3)(4)(5)</sup>	122812	6	2...23	250 mA cost.	25	-25...+60	80	0,6 C	73
DC 8W 350mA STM/U <sup>(3)(4)(5)</sup>	122811	6/8 <sup>(2)</sup>	2...23	350 mA cost.	25	-25...+55 <sup>(2)</sup> /60	80	0,6 C	77
DC 6W 500mA STM/U <sup>(3)(5)</sup>	122813	6	2...11,5	500 mA cost.	13	-25...+55	75	0,6 C	73
DC 6W 700mA STM/U <sup>(3)(5)</sup>	122815	6	2...8,5	700 mA cost.	13	-25...+50	70	0,6 C	73

<sup>(1)</sup> Referred to V<sub>m</sub> = 230 V, 100% load - Riferito a V<sub>m</sub> = 230 V, carico 100%

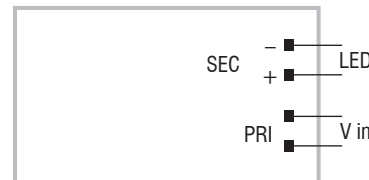
BUILT-IN SCREW FIXING

Weight - Peso: gr. 35 / 1,23 oz.  
Pcs - Pezzi 10



**Wiring diagram - Schema di collegamento**

(Max. LED distance on page info8 - Massima distanza LED a pagina info8)



**Features**

- Driver for built-in use.
- Input and output terminal blocks on the same side.
- Single terminal at the primary and secondary circuit (wire cross-section up to 2,5 mm<sup>2</sup> / AWG13).
- Ultra compact size.
- It can be used for lighting equipment in protection class I and II.
- Driver can be secured with slot for screws.
- Protections:
  - against overheating and short circuits;
  - against mains voltage spikes;
  - against overloads.
- Current regulation -8 % + 5 % including temperature variations.

**Caratteristiche**

- Alimentatore da incorporare.
- Morsetti di entrata e uscita sullo stesso lato.
- Singolo morsetto su primario e secondario (sezione cavo fino a 2,5 mm<sup>2</sup> / AWG13).
- Dimensioni molto ridotte e compatte.
- Utilizzabile per apparecchi di illuminazione in classe di protezione I e II.
- Fissaggio dell'alimentatore tramite asole per viti.
- Protezioni:
  - termica e cortocircuito;
  - contro le extra-tensioni di rete;
  - contro i sovraccarichi.
- Corrente regolata -8 % + 5 % incluse variazioni di temperatura.

7 YEARS WARRANTY 3% FAILURE RATE  
10 YEARS WARRANTY 5% FAILURE RATE

PRODUCER'S LIABILITY  
10 YEARS WARRANTY TO THE LED MANUFACTURER  
ACCORDING TO THE CE MARKING REGULATIONS  
2011

1.1  
Single current drivers - Without PFC  
Alimentatori corrente singola - Senza PFC