



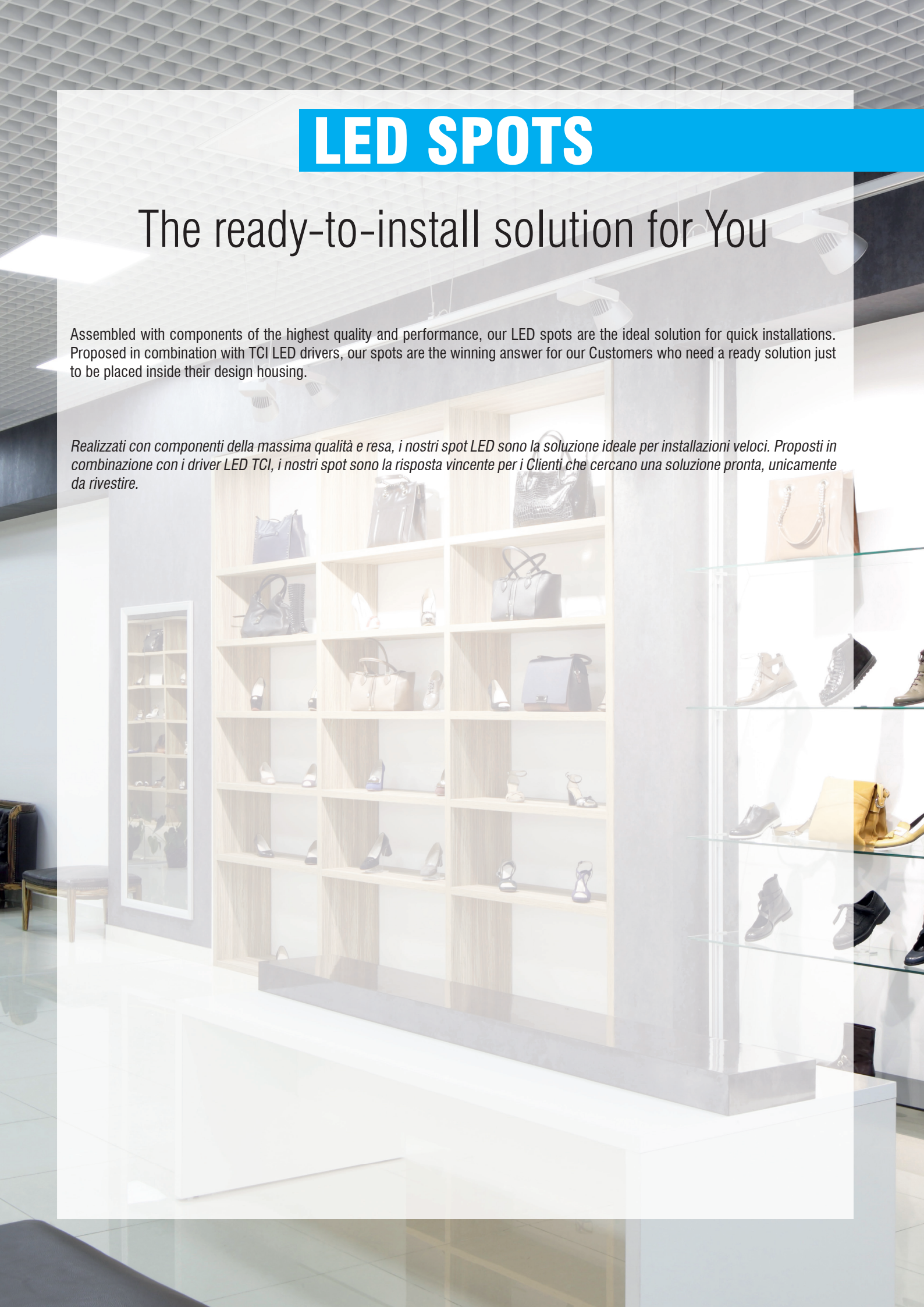


# LED SPOTS

## The ready-to-install solution for You

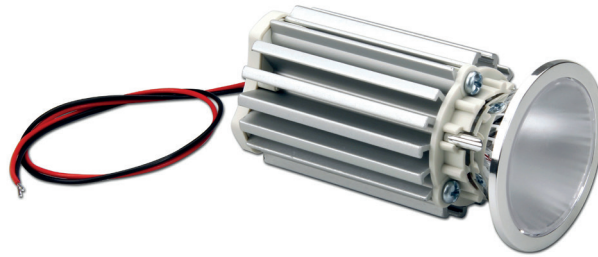
Assembled with components of the highest quality and performance, our LED spots are the ideal solution for quick installations. Proposed in combination with TCI LED drivers, our spots are the winning answer for our Customers who need a ready solution just to be placed inside their design housing.

*Realizzati con componenti della massima qualità e resa, i nostri spot LED sono la soluzione ideale per installazioni veloci. Proposti in combinazione con i driver LED TCI, i nostri spot sono la risposta vincente per i Clienti che cercano una soluzione pronta, unicamente da rivestire.*



UP TO  
**166**  
lm/W

**L80 B20**  
>150.000 h  
@ tc=80 °C



constant  
**CURRENT**

**CRI**  
>80  
>90

**Rated Current**  
150 mA  
200 mA  
250 mA

**Available (CCT) colour temperature**  
3000 K  
4000 K

2700 K on request - su richiesta  
3500 K on request - su richiesta  
5000 K on request - su richiesta  
5700 K on request - su richiesta  
6500 K on request - su richiesta

**Beam angle**  
20°  
35°  
55°

**Ambient temperature**  
ta: -40...+45 °C  
(Only for tc ≤ 90 °C)

**Module temperature**  
tc: 90 °C

**Standards compliance**  
EN 55015  
EN 61347-1  
EN 62031  
EN 62471

Article Articolò	Code Codice	Temp. Color Colore	Typ Current (I typ) mA	Flux lm <sup>(1)</sup> (I typ 25°C) tc	Flux lm <sup>(1)</sup> (I typ 80°C) tc	V	Power W	Efficacy Tc 25°C lm/W	Efficacy Tc 80°C lm/W	ta °C	tc °C	CRI	Beam angle	
<b>LED SPOT 600 CRI 80</b>	131296/830/20	3000K	150	774	720	33,3	4,9	158	150	-20...+45	90	>80	20°	
			200	1020	948	33,3	6,6	154	146	-20...+45				
			250	1259	1170	33,3	8,4	150	142	-20...+45				
	131296/830/35	3000K	3000K	150	774	720	33,3	4,9	158	150	-20...+45	90	>80	35°
				200	1020	948	33,3	6,6	154	146	-20...+45			
				250	1259	1170	33,3	8,4	150	142	-20...+45			
	131296/830/55	3000K	3000K	150	774	720	33,3	4,9	158	150	-20...+45	90	>80	55°
				200	1020	948	33,3	6,6	154	146	-20...+45			
				250	1259	1170	33,3	8,4	150	142	-20...+45			
	131296/840/20	4000K	4000K	150	813	756	33,3	4,9	166	157	-20...+45	90	>80	20°
				200	1070	995	33,3	6,6	162	153	-20...+45			
				250	1322	1230	33,3	8,4	157	150	-20...+45			
131296/840/35	4000K	4000K	150	813	756	33,3	4,9	166	157	-20...+45	90	>80	35°	
			200	1070	995	33,3	6,6	162	153	-20...+45				
			250	1322	1230	33,3	8,4	157	150	-20...+45				
131296/840/55	4000K	4000K	150	813	756	33,3	4,9	166	157	-20...+45	90	>80	55°	
			200	1070	995	33,3	6,6	162	153	-20...+45				
			250	1322	1230	33,3	8,4	157	150	-20...+45				
<b>LED SPOT 600 CRI 90</b>	131296/930/20	3000K	150	663	617	33,3	4,9	135	128	-20...+45	90	>90	20°	
			200	874	812	33,3	6,6	132	125	-20...+45				
			250	1078	1002	33,3	8,4	129	122	-20...+45				
	131296/930/35	3000K	3000K	150	663	617	33,3	4,9	135	128	-20...+45	90	>90	35°
				200	874	812	33,3	6,6	132	125	-20...+45			
				250	1078	1002	33,3	8,4	129	122	-20...+45			
	131296/930/55	3000K	3000K	150	663	617	33,3	4,9	135	128	-20...+45	90	>90	55°
				200	874	812	33,3	6,6	132	125	-20...+45			
				250	1078	1002	33,3	8,4	129	122	-20...+45			
	131296/940/20	4000K	4000K	150	697	648	33,3	4,9	142	135	-20...+45	90	>90	20°
				200	918	853	33,3	6,6	138	131	-20...+45			
				250	1133	1053	33,3	8,4	135	128	-20...+45			
131296/940/35	4000K	4000K	150	697	648	33,3	4,9	142	135	-20...+45	90	>90	35°	
			200	918	853	33,3	6,6	138	131	-20...+45				
			250	1133	1053	33,3	8,4	135	128	-20...+45				
131296/940/55	4000K	4000K	150	697	648	33,3	4,9	142	135	-20...+45	90	>90	55°	
			200	918	853	33,3	6,6	138	131	-20...+45				
			250	1133	1053	33,3	8,4	135	128	-20...+45				

<sup>(1)</sup> The written flux includes the 20% losses due to the reflector - Il flusso riportato include la perdita del 20% dovuta al riflettore

## Main features

- LED SPOT for built-in use.
- Polycarbonate spotlight 50mm diameter.
- PMMA diffusing or transparent lens to cover the spotlight.
- Minimum colour tolerance: 3MacAdam (3SDCM).
- Perfect light uniformity.
- Anodized aluminium heat sink.
- Provided with power wires and tear-proof cable clamps.
- Emitting angle: 20°/35°/55°.
- High efficiency of the system in combination with TCI drivers.
- The use is guaranteed in combination with TCI drivers only.

## Caratteristiche principali

- SPOT LED da incorporare.
- Riflettore in policarbonato Diametro 50 mm.
- Lente diffondente o trasparente in PMMA a copertura del riflettore.
- Minima tolleranza di colore: 3MacAdam (3SDCM).
- Perfetta uniformità di luce.
- Dissipatore in alluminio anodizzato.
- Provvisto di cavi di alimentazione e fissacavo antistrappo.
- Angolo di emissione: 20°/35°/55°.
- Alta efficienza del sistema in combinazione con driver TCI.
- L'utilizzo è garantito in combinazione con driver TCI.

**7 YEARS WARRANTY**  
3% FAILURE RATE

**10 YEARS WARRANTY**  
5% FAILURE RATE

PRODUCER'S LIABILITY  
**TCI**

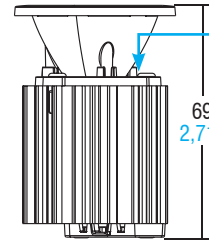
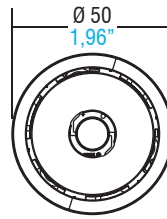
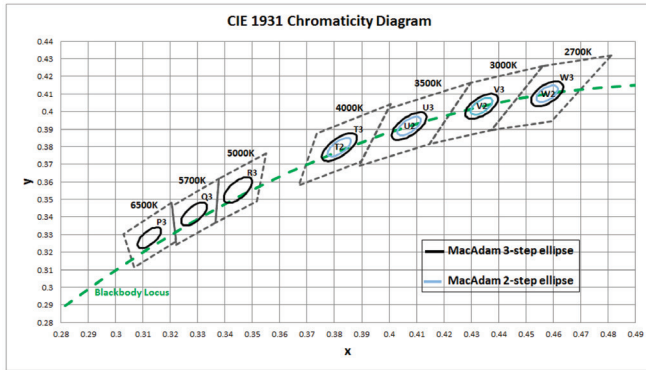
WARRANTY 10 YEARS  
ACCORDING TO THE EUROPEAN CONDITIONS

## LED spots

### Technical features - Caratteristiche tecniche

Chromaticity region & Coordinates ( $I_f = 360 \text{ mA}$ ,  $T_j = 85 \text{ °C}$ )

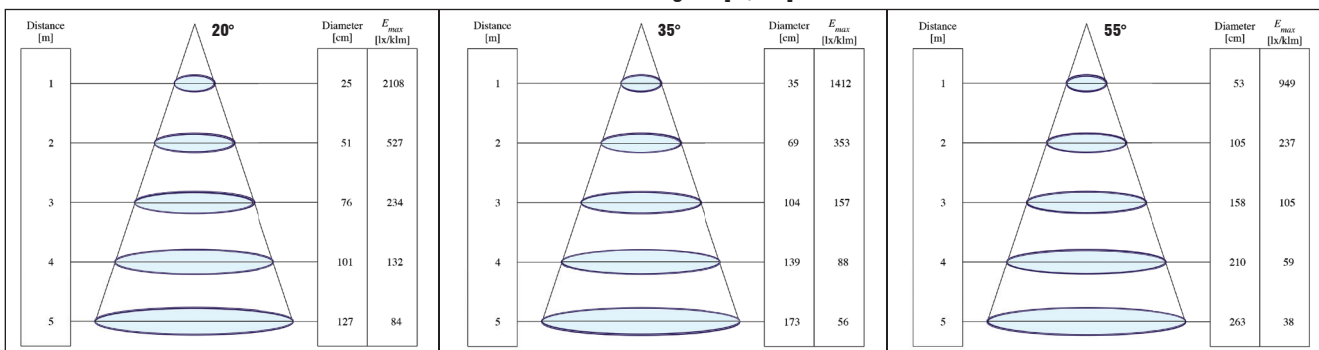
**LED SPOT 600** (Weight/Peso 3,17 oz. / gr. 90 - Pcs/Pezzi 20)



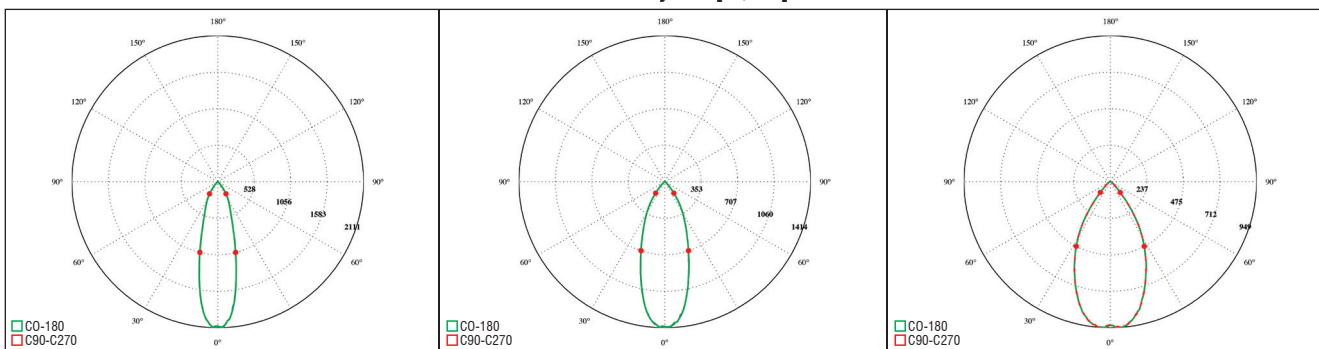
The **tc point** is on the welding point between the COB and the black wire

**tc point** è preso sul punto di saldatura tra piazzola COB e filo nero

### Illuminance Diagram [Lx/klm]



### Polar Intensity Plot [cd/klm]



I dati indicati sono stati rilevati a CCT 4000K CRI>90 @250mA, Tc=80°C

### LED driver choice table - Tabella di scelta driver

Article	Current	Power	Standard Driver		Standard Driver PFC>0,9		Dimmable 1-10V & PUSH		Dimmable DALI	
			Article	Code	Article	Code	Article	Code	Article	Code
LED SPOT 600	150	5	MP 15	122360	UNIVERSALE LC	122203	MINIJOLLY LC	123401-151401	-	-
	200	7	MP 15	122360	UNIVERSALE LC	122203	MINIJOLLY LC	123401-151401	-	-
	250	8,7	MP 15	122360	UNIVERSALE 20	122201	MINIJOLLY LC	123401-151401	MINIJOLLY DALI	125403-151403
			DCC 10W 250mA US	122358	UNIVERSALE LC	122203				

Article	Code	Rated Voltage	P out W <sup>(1)</sup>	V out	dimension (mm)	Ø mm	Efficiency (100%) <sup>(1)</sup>	ta °C	tc °C	Power Factor λ	Dimmable
DCC 10W 250mA	122358	110-240	10	43	115x34x19	40	73	-25+50	75	0,6 C	NO
MP 15	122360	100-240	15 (10)	41,5	115x34x19	40	82	-25+50	75	0,6 C	NO
UNIVERSALE 20 LC	122203	220-240	20	55	110x52x22	55	>87	-25+50	75	0,95	NO
MINIJOLLY	125400-151400	110-240	20	43	110x52x22	55	>87	-25+50	80	0,95	1...10V - PUSH
MINIJOLLY LC	123401-151401	110-240	20	43	110x52x22	55	>87	-25+45	75	0,95	1...10V - PUSH
MINIJOLLY DALI	125403-151403	110-240	20	43	110x52x22	55	>87	-25+45	75	0,95	DALI

<sup>(1)</sup> Referred to  $V_{in} = 230 \text{ V}$ , 100% load - Riferito a  $V_{in} = 230 \text{ V}$ , carico 100%

For additional technical informations please visit our website: [www.tci.it](http://www.tci.it)

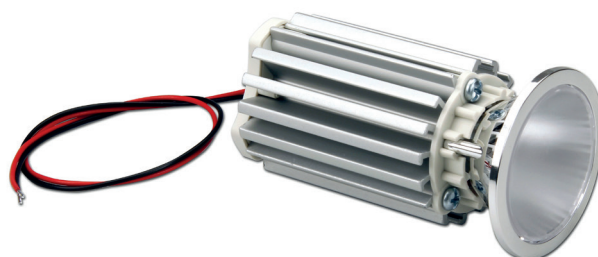




UP TO  
**157**  
lm/W

**L80  
B20**

>150.000 h  
@ tc=80 °C



constant  
**CURRENT**

### CRI

>80  
>90

### Rated Current

250 mA  
300 mA  
350 mA

### Available (CCT) colour temperature

3000 K  
4000 K

**5**

LED SPOTS

2700 K on request - su richiesta  
3500 K on request - su richiesta  
5000 K on request - su richiesta  
5700 K on request - su richiesta  
6500 K on request - su richiesta

### Beam angle

20°  
35°  
55°

### Ambient temperature

ta: -40...+45 °C  
(Only for tc ≤ 90 °C)

### Module temperature

tc: 90 °C

### Standards compliance

EN 55015  
EN 61347-1  
EN 62031  
EN 62471

Article Articolino	Code Codice	Temp. Color Colore	Typ Current (I typ) mA	Flux lm <sup>(1)</sup> (I typ 25°C) tc	Flux lm <sup>(1)</sup> (I typ 80°C) tc	V	Power W	Efficacy Tc 25°C lm/W	Efficacy Tc 80°C lm/W	ta °C	tc °C	CRI	Beam angle	
<b>LED SPOT 1000 CRI 80</b>	131297/830/20	3000K	250	1260	1170	34,3	8,4	150	142	-20...+45	90	>80	20°	
			300	1490	1390	34,7	10,1	146	139	-20...+45				
			350	1720	1595	35,2	12,9	143	135	-20...+45				
	131297/830/35	3000K	3000K	250	1260	1170	34,3	8,4	150	142	-20...+45	90	>80	35°
				300	1490	1390	34,7	10,1	146	139	-20...+45			
				350	1720	1595	35,2	12,9	143	135	-20...+45			
	131297/830/55	3000K	3000K	250	1260	1170	34,3	8,4	150	142	-20...+45	90	>80	55°
				300	1490	1390	34,7	10,1	146	139	-20...+45			
				350	1720	1595	35,2	12,9	143	135	-20...+45			
	131297/840/20	4000K	4000K	250	1322	1230	34,3	8,4	157	150	-20...+45	90	>80	20°
				300	1565	1455	34,7	10,1	154	146	-20...+45			
				350	1800	1675	35,2	12,9	150	142	-20...+45			
131297/840/35	4000K	4000K	250	1322	1230	34,3	8,4	157	150	-20...+45	90	>80	35°	
			300	1565	1455	34,7	10,1	154	146	-20...+45				
			350	1800	1675	35,2	12,9	150	142	-20...+45				
131297/840/55	4000K	4000K	250	1322	1230	34,3	8,4	157	150	-20...+45	90	>80	55°	
			300	1565	1455	34,7	10,1	154	146	-20...+45				
			350	1800	1675	35,2	12,9	150	142	-20...+45				
<b>LED SPOT 1000 CRI 90</b>	131297/930/20	3000K	250	1080	1002	34,3	8,4	129	122	-20...+45	90	>90	20°	
			300	1280	1190	34,7	10,1	125	119	-20...+45				
			350	1470	1370	35,2	12,9	122	116	-20...+45				
	131297/930/35	3000K	3000K	250	1080	1002	34,3	8,4	129	122	-20...+45	90	>90	35°
				300	1280	1190	34,7	10,1	125	119	-20...+45			
				350	1470	1370	35,2	12,9	122	116	-20...+45			
	131297/930/55	3000K	3000K	250	1080	1002	34,3	8,4	129	122	-20...+45	90	>90	55°
				300	1280	1190	34,7	10,1	125	119	-20...+45			
				350	1470	1370	35,2	12,9	122	116	-20...+45			
	131297/940/20	4000K	4000K	250	1133	1053	34,3	8,4	135	128	-20...+45	90	>90	20°
				300	1340	1245	34,7	10,1	132	125	-20...+45			
				350	1545	1435	35,2	12,9	128	122	-20...+45			
131297/940/35	4000K	4000K	250	1133	1053	34,3	8,4	135	128	-20...+45	90	>90	35°	
			300	1340	1245	34,7	10,1	132	125	-20...+45				
			350	1545	1435	35,2	12,9	128	122	-20...+45				
131297/940/55	4000K	4000K	250	1133	1053	34,3	8,4	135	128	-20...+45	90	>90	55°	
			300	1340	1245	34,7	10,1	132	125	-20...+45				
			350	1545	1435	35,2	12,9	128	122	-20...+45				

<sup>(1)</sup> The written flux includes the 20% losses due to the reflector - Il flusso riportato include la perdita del 20% dovuta al riflettore

### Main features

- LED SPOT for built-in use.
- Polycarbonate spotlight 50mm diameter.
- PMMA diffusing or transparent lens to cover the spotlight.
- Minimum colour tolerance: 3MacAdam (3SDCM).
- Perfect light uniformity.
- Anodized aluminium heat sink.
- Provided with power wires and tear-proof cable clamps.
- Emitting angle: 20°/35°/55°.
- High efficiency of the system in combination with TCI drivers.
- The use is guaranteed in combination with TCI drivers only.

### Caratteristiche principali

- SPOT LED da incorporare.
- Riflettore in policarbonato Diametro 50 mm.
- Lente diffondente o trasparente in PMMA a copertura del riflettore.
- Minima tolleranza di colore: 3MacAdam (3SDCM).
- Perfetta uniformità di luce.
- Dissipatore in alluminio anodizzato.
- Provvisto di cavi di alimentazione e fissacavo antistrappo.
- Angolo di emissione: 20°/35°/55°.
- Alta efficienza del sistema in combinazione con driver TCI.
- L'utilizzo è garantito in combinazione con driver TCI.

**7**  
YEARS  
WARRANTY  
3% FAILURE RATE

**10**  
YEARS  
WARRANTY  
5% FAILURE RATE

PRODUCER'S LIABILITY  
TCI

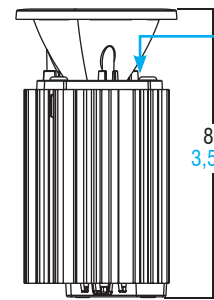
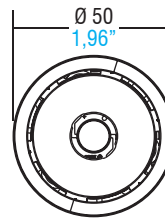
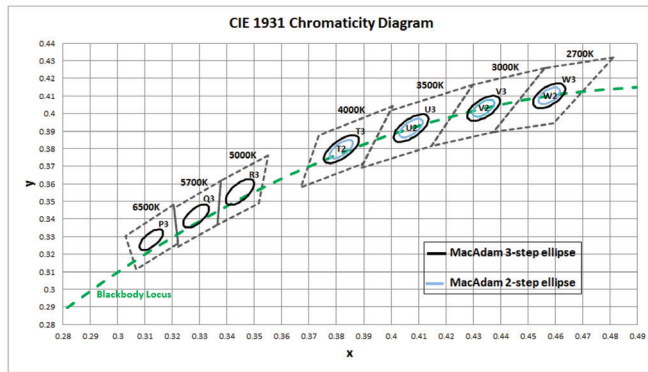
WARRANTY 10 YEARS  
ACCORDING TO THE EUROPEAN CONDITIONS

## LED spots

### Technical features - Caratteristiche tecniche

Chromaticity region & Coordinates ( $I_f=360\text{ mA}$ ,  $T_j=85\text{ °C}$ )

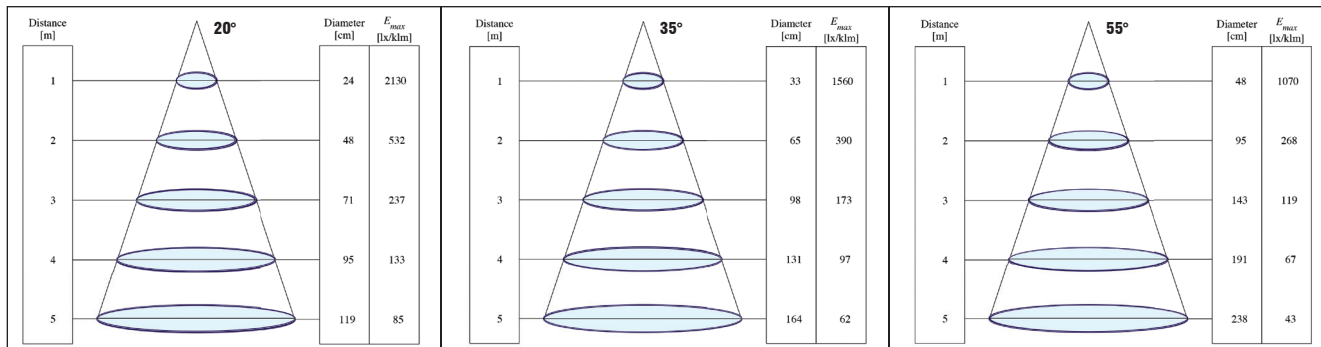
**LED SPOT 1000** (Weight/Peso **4,58 oz.** / gr. 130 - Pcs/Pezzi 20)



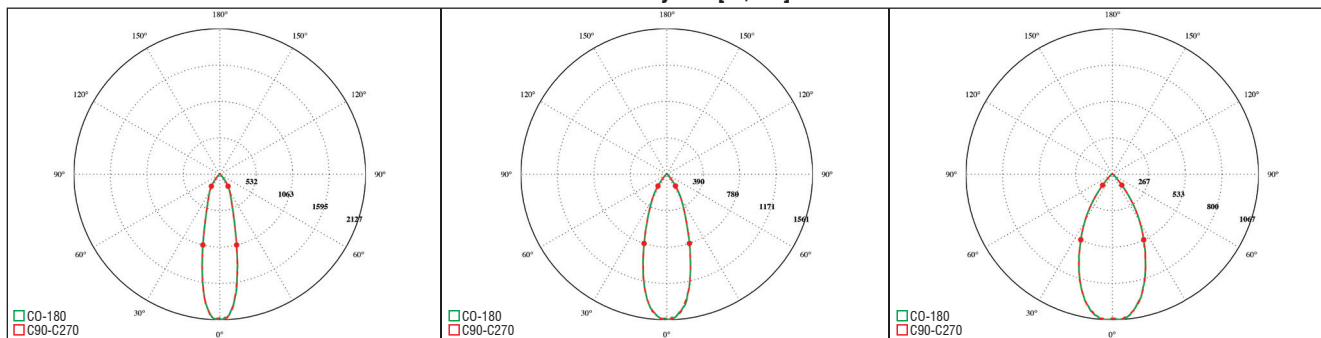
The **tc point** is on the welding point between the COB and the black wire

**tc point** è preso sul punto di saldatura tra piazzola COB e filo nero

### Illuminance Diagram [Lx/klm]



### Polar Intensity Plot [cd/klm]



I dati indicati sono stati rilevati a CCT 4000K CRI>90 @350mA, Tc=80°C

### LED driver choice table - Tabella di scelta driver

Article	Current	Power	Standard Driver		Standard Driver PFC>0,9		Dimmable 1-10V & PUSH		Dimmable DALI	
			Article	Code	Article	Code	Article	Code	Article	Code
LED SPOT 1000	250	8,7	MP 15	122360	UNIVERSALE 20	122201	MINIJOLLY LC	123401-151401	MINIJOLLY DALI	125403-151403
			DCC 10W 250mA US	122358	UNIVERSALE LC	122203				
	300	10,6	MP 15	122360	UNIVERSALE LC	122203	MINIJOLLY LC	123401-151401	-	-
			DCC 15W 350mA US	122350	UNIVERSALE 20	122201	MINIJOLLY	125400-151400	MINIJOLLY DALI	125403-151403
350	12,5	MP 15	122360	UNIVERSALE LC	122203	MINIJOLLY LC	123401-151401			

Article	Code	Rated Voltage	P out W <sup>(1)</sup>	V out	dimension (mm)	Ø mm	Efficiency $\eta$ (100%) <sup>(1)</sup>	ta °C	tc °C	Power Factor $\lambda$	Dimmable
DCC 10W 250mA	122358	110-240	10	43	115x34x19	40	73	-25+50	75	0,6 C	NO
DCC 15W 350mA	122350	110-240	15 (10)	43	115x34x19	40	77	-25+45	75	0,6 C	NO
MP 15	122360	100-240	15 (10)	41,5	115x34x19	40	82	-25+50	75	0,6 C	NO
UNIVERSALE 20	122201	220-240	20	57	110x52x22	55	>88	-25+50	80	0,95	NO
UNIVERSALE 20 LC	122203	220-240	20	55	110x52x22	55	>87	-25+50	75	0,95	NO
MINIJOLLY	125400-151400	110-240	20	43	110x52x22	55	>87	-25+50	80	0,95	1...10V - PUSH
MINIJOLLY LC	123401-151401	110-240	20	43	110x52x22	55	>87	-25+45	75	0,95	1...10V - PUSH
MINIJOLLY DALI	125403-151403	110-240	20	43	110x52x22	55	>87	-25+45	75	0,95	DALI

<sup>(1)</sup> Referred to  $V_{in} = 230\text{ V}$ , 100% load - Riferito a  $V_{in} = 230\text{ V}$ , carico 100%

For additional technical informations please visit our website: [www.tci.it](http://www.tci.it)