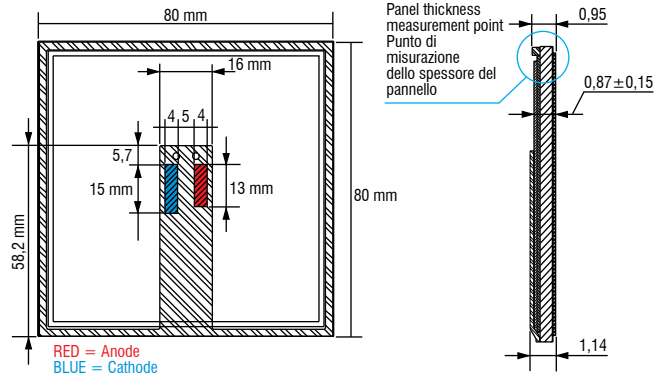
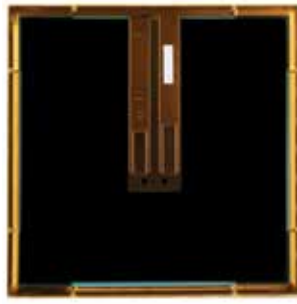
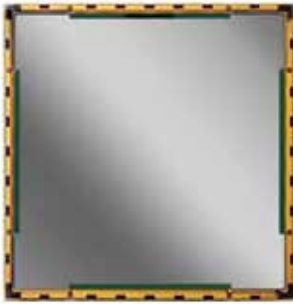




Made in Japan



Weight - Peso 0,63 oz. / gr. 18 - Pcs - Pezzi 1

### Rated Current Corrente Nominale

640 mA  
960 mA

### Rated Voltage Tensione Nominale

4,9 V  
11,1 V

### Power Potenza

3,1 W  
10,6 W

### OLED colour Colore OLED

Red / Rosso  
Green / Verde  
Blue / Blu  
Amber / Ambra

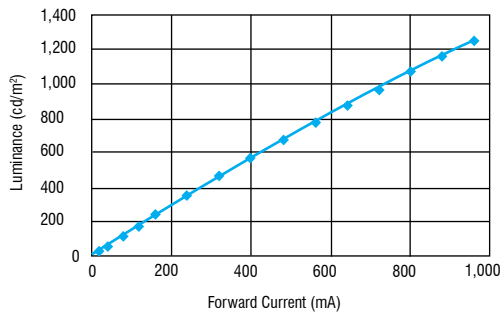
### Reference Norms Norme di riferimento:

EN 55015

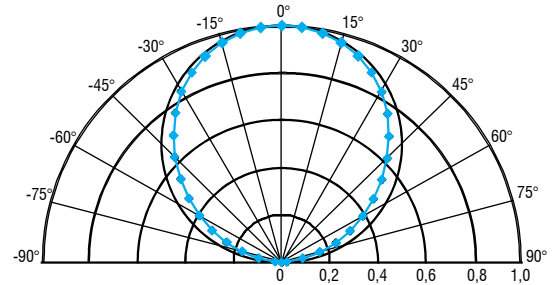
Article Articolo	Code Codice	Colour Colore	Flux lm <sup>(1)</sup> (25°C ta)	typ Current (mA)	Typ Voltage (V)	Power (W)	Max. Current (mA)	Max. Voltage (V)	ta °C	Life Time LT 70 (h)
<b>RED OLED</b>	462603003	RED	21 lm	640mA	4,9 V	3,1 W	960mA	4,9 V	5...+40	17000 h
<b>GREEN OLED</b>	462603004	GREEN	40 lm	640mA	5,5 V	3,5 W	960mA	5,5 V	5...+40	20000 h
<b>BLUE OLED</b>	462603005	BLUE	22 lm	640mA	6,1 V	4 W	960mA	6,1 V	5...+40	1000 h
<b>AMBER OLED</b>	462603006	AMBER	20 lm	640mA	6 V	3,8 W	960mA	6 V	5...+40	4000 h

<sup>(1)</sup> The OLED lighting panels are also available with connector (code / FC)  
I pannelli OLED sono anche disponibili provvisti di connettore (codice / FC)

### Standard optical characteristics - Caratteristiche ottiche standard



Forward current vs. luminance (ta = 25°C)  
Rapporto corrente / luminanza (ta = 25°C)



Luminaire flux pattern (If=640mA / ta=25°C)  
Distribuzione flusso (If=640mA / ta=25°C)

- Mirrored surface.
- Square OLED lighting panel for built-in use.
- Extremely thin and light.
- Dimmable with TCI drivers.
- Perfect light uniformity.
- Self dissipating.
- OLED lighting panels are not protected against voltage spikes, overloads and short circuits. their maximum performance is guaranteed in combination with TCI drivers only.

- Superficie a specchio.
- Pannello OLED quadrato da incorporare.
- Estremamente sottile e leggero.
- Dimmerabile con alimentatori TCI.
- Perfetta uniformità luminosa.
- Autodissipante.
- I pannelli OLED non sono protetti contro extratensioni, sovraccarichi e cortocircuiti. Le loro massime prestazioni sono garantite unicamente con driver TCI.

7.

OLED