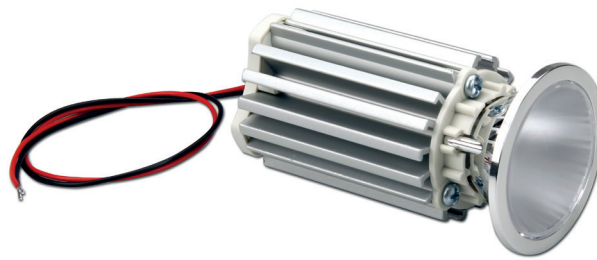


# LED SPOT 600 GEN2

LED spots

Made in Italy 



constant CURRENT



**CRI**  
>90

**Rated Current**  
**Corrente Nominale**  
150 mA  
200 mA  
250 mA

**Power**  
**Potenza**  
5 W  
6,7 W  
8,5 W

**Available (CCT)**  
**colour temperature**  
3000 K  
4000 K

2700 K on request - su richiesta  
5000 K on request - su richiesta  
5700 K on request - su richiesta  
6500 K on request - su richiesta

**Beam angle**  
20°  
35°  
55°

**Ambient temperature**  
**Ta:** -20...+45 °C  
(Only for Tc ≤90°C)

**Module temperature**  
**Tc max:** 90 °C

**Reference Norms**  
**Norme di riferimento:**  
EN 55015  
EN 61347-1  
EN 61547  
EN 62031  
EN 62471

Article Articolato	Code Codice	Temp. Color Colore	Typ Current (I typ) mA	Flux Im <sup>(1)</sup> (I typ 25°C) tc	Flux Im <sup>(1)</sup> (I typ 80°C) tc	V	Power W	Efficacy Tc 25°C lm/W	Efficacy Tc 80°C lm/W	ta °C	tc °C	CRI	Beam angle	
LED SPOT 600 GEN2	128415/930/20	3000K	150	782	711	33,3	5	156	150	-20...+45	90	>90	20°	
			200	1023	929	33,8	6,7	153	139	-20...+45				
			250	1253	1138	34,3	8,5	147	134	-20...+35				
	128415/930/35	3000K	3000K	150	782	711	33,3	5	156	150	-20...+45	90	>90	35°
				200	1023	929	33,8	6,7	153	139	-20...+45			
				250	1253	1138	34,3	8,5	147	134	-20...+35			
	128415/930/55	3000K	3000K	150	782	711	33,3	5	156	150	-20...+45	90	>90	55°
				200	1023	929	33,8	6,7	153	139	-20...+45			
				250	1253	1138	34,3	8,5	147	134	-20...+35			
	128415/940/20	4000K	4000K	150	827	751	33,3	5	165	150	-20...+45	90	>90	20°
				200	1081	982	33,8	6,7	161	147	-20...+45			
				250	1324	1203	34,3	8,5	156	142	-20...+35			
	128415/940/35	4000K	4000K	150	827	751	33,3	5	165	150	-20...+45	90	>90	35°
				200	1081	982	33,8	6,7	161	147	-20...+45			
				250	1324	1203	34,3	8,5	156	142	-20...+35			
	128415/940/55	4000K	4000K	150	827	751	33,3	5	165	150	-20...+45	90	>90	55°
				200	1081	982	33,8	6,7	161	147	-20...+45			
				250	1324	1203	34,3	8,5	156	142	-20...+35			

<sup>(1)</sup> The mentioned data can have a 10% tolerance - Il dato indicato può avere una tolleranza del 10%.

## Main features

- LED SPOT for built-in use.
- Polycarbonate spotlight 50mm diameter.
- PMMA diffusing or transparent lens to cover the spotlight.
- Minimum colour tolerance: 3MacAdam (3SDCM).
- Perfect light uniformity.
- Anodized aluminium heat sink.
- Provided with power wires and tear-proof cable clamps.
- Emitting angle: 20°/35°/55°
- High efficiency of the system in combination with TCI drivers.
- The use is guaranteed in combination with TCI drivers only.

## Caratteristiche principali

- SPOT LED da incorporare.
- Riflettore in policarbonato Diametro 50 mm.
- Lente diffondente o trasparente in PMMA a copertura del riflettore.
- Minima tolleranza di colore: 3MacAdam (3SDCM).
- Perfetta uniformità di luce.
- Dissipatore in alluminio anodizzato.
- Provvisto di cavi di alimentazione e fissacavo antistrappo.
- Angolo di emissione: 20°/35°/55°
- Alta efficienza del sistema in combinazione con driver TCI.
- L'utilizzo è garantito in combinazione con driver TCI.



6

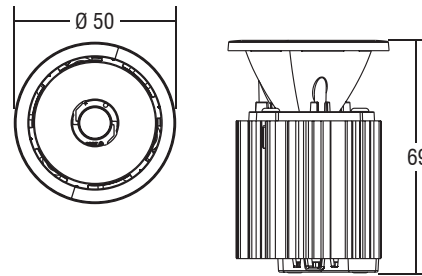
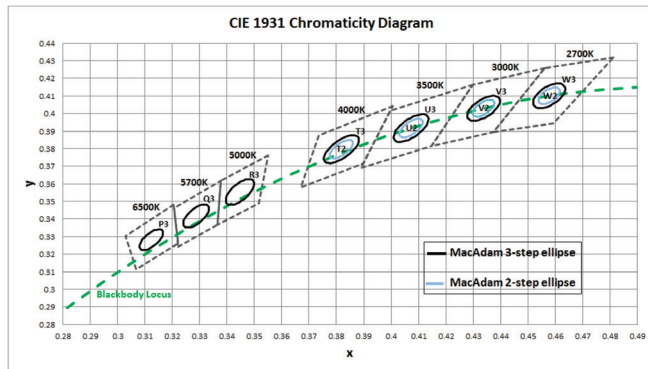
LED SPOTS

## LED spots

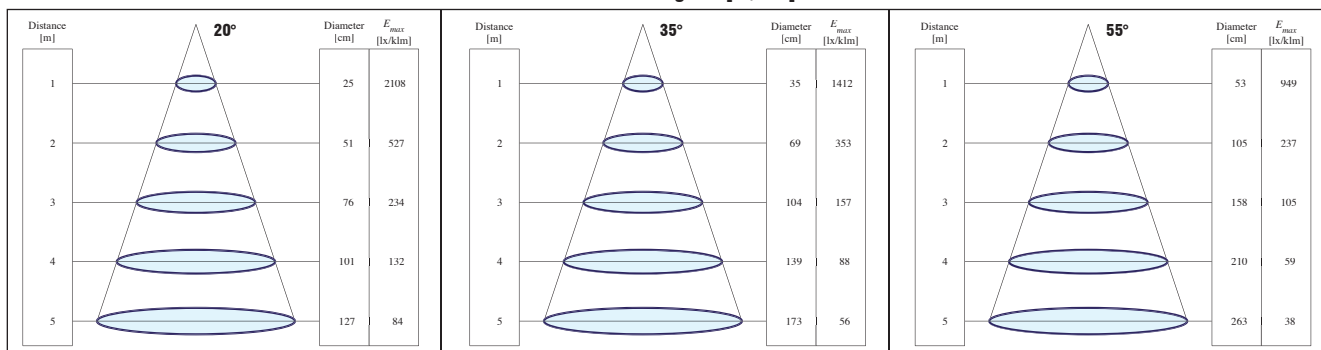
### Technical features - Caratteristiche tecniche

Chromaticity region & Coordinates ( $I_f = 360 \text{ mA}$ ,  $T_j = 85 \text{ °C}$ )

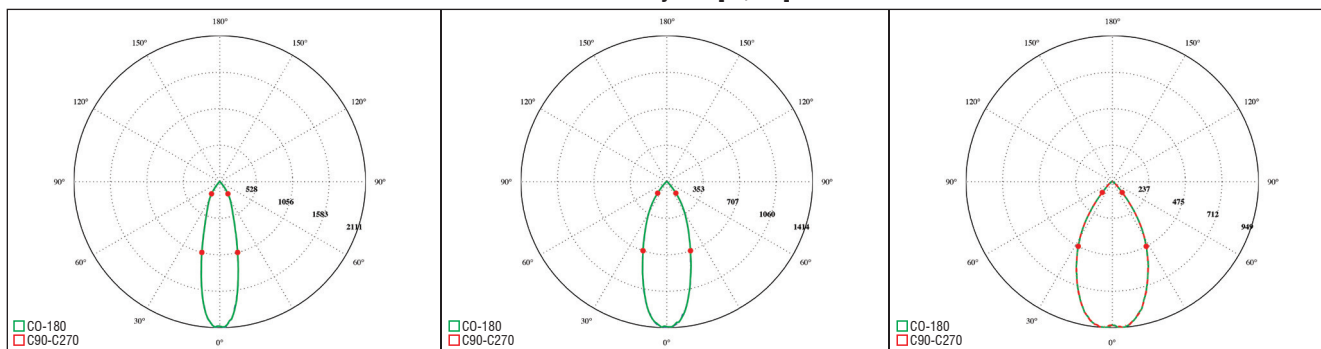
**LED SPOT 600** (Weight/Peso 3,17 oz. / gr. 90 - Pcs/Pezzi 1)



**Illuminance Diagram [Lx/klm]**



**Polar Intensity Plot [cd/klm]**



I dati indicati sono stati rilevati a CCT 4000K CRI>90 @250mA, Tc=80°C

### LED driver choice table - Tabella di scelta driver

Article	Current	Power	Standard Driver		Standard Driver PFC>0,9		Dimmable 1-10V & PUSH		Dimmable DALI	
			Article	Code	Article	Code	Article	Code	Article	Code
LED SPOT 600	150	5	MP 15	122360	UNIVERSALE LC	122203	MINIJOLLY LC	123401-151401	-	-
	200	7	MP 15	122360	UNIVERSALE LC	122203	MINIJOLLY LC	123401-151401	-	-
	250	8,7	MP 15	122360	UNIVERSALE 20	122201	MINIJOLLY LC	123401-151401	MINIJOLLY DALI	125403-151403
			DCC 10W 250mA US	122358	UNIVERSALE LC	122203				

Article	Code	Rated Voltage	P out W <sup>(1)</sup>	V out	dimension (mm)	Ø mm	Efficiency (100%) <sup>(1)</sup>	ta °C	tc °C	Power Factor λ	Dimmable
DCC 10W 250mA	122358	110-240	10	43	115x34x19	40	73	-25+50	75	0,6 C	NO
MP 15	122360	100-240	15 (10)	41,5	115x34x19	40	82	-25+50	75	0,6 C	NO
UNIVERSALE 20 LC	122203	220-240	20	55	110x52x22	55	>87	-25+50	75	0,95	NO
MINIJOLLY	125400-151400	110-240	20	43	110x52x22	55	>87	-25+50	80	0,95	1...10V - PUSH
MINIJOLLY LC	123401-151401	110-240	20	43	110x52x22	55	>87	-25+45	75	0,95	1...10V - PUSH
MINIJOLLY DALI	125403-151403	110-240	20	43	110x52x22	55	>87	-25+45	75	0,95	DALI

<sup>(1)</sup> Referred to  $V_{in} = 230 \text{ V}$ , 100% load - Riferito a  $V_{in} = 230 \text{ V}$ , carico 100%

For additional technical informations please visit our website: [www.tci.it](http://www.tci.it)