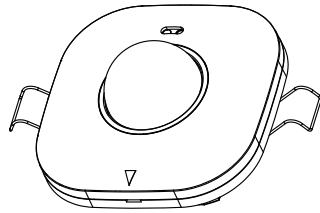


High-mounting PIR Motion Sensor (ON/OFF Version)



User's Manual



Instruction
MI250617A0



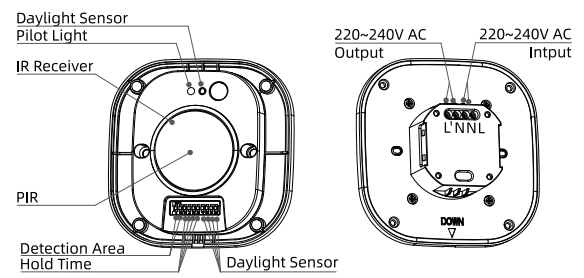
PRODUCT DESCRIPTION

IRS MOTION LN is a high-mounting PIR motion sensor with daylight detection function. Combined with the unique software algorithm of Merrytek, it can accurately detect human movements in almost all high-mounting scenario to control lighting automatic ON/OFF in warehouse, lobby, workshop etc.

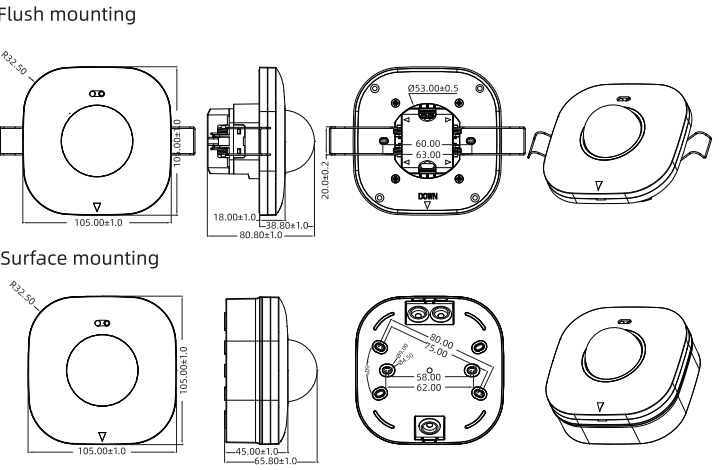
INITIALIZATION

When powered on, sensor indicator will turn off after flashing for 10s and will not detect moving signal during this time. After 10s, you can use dip switch to adjust detection area, hold time and daylight sensor etc parameter.

PRODUCT INTRODUCE



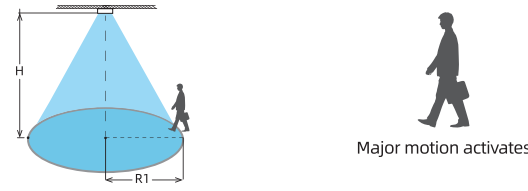
DIMENSION(mm)



PARAMETERS

Model	IRS MOTION LN - cod. 120234	
Input Voltage	220-240V AC	
Working current	20mA max	
Power consumption	≤0.5W @12/24V DC	
Output signal	1 channel 16A relayON/OFF(Max 800w resistive loading and 400w inductive loading)	
Max. Surge Capacity	50A (50% Ipeak, twidth =200us, 230Vac full load, cold start)	
Function	PIR motion detection+ daylight sensor	
Sensor Parameter	Detection Area	DIP or Remote setting: 100%/75%/50%/25%
	Hold Time	DIP: 5s/1min/3min/5min 10min/20min/30min
	Daylight Sensor	DIP or Remote setting: 5Lux/15Lux/30Lux/50Lux/100Lux/150Lux/Disable
	Detecting Range (100% detection area, radius)	4-5m@25°C based on 8m mounting height
Mounting height	2.5-10m, typical value:8m	
Working temperature	-25°C ~ +50°C	
Storage temperature	-40°C ~ +80°C	
Hole Size	Φ55mm	
IP Rating	IP20(Flush mounting) IP54(Surface mounting)	
Warranty	5 years(only for product quality problem under indoor application)	

DETECTION AREA

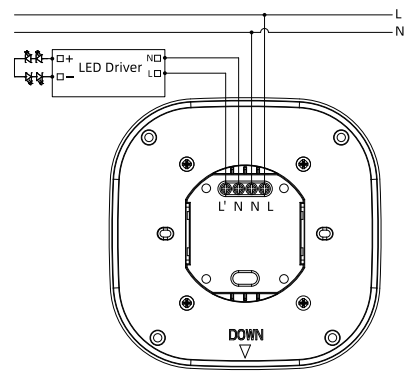


● Major motion activates: detect the human significant moving (walking) in the detection area.

Detection sensitivity	100%	75%	50%	25%
Radius detection range based on 8m height	4.5-5.0m	3.5-4.5m	3.0-3.5m	2.0-3.0m

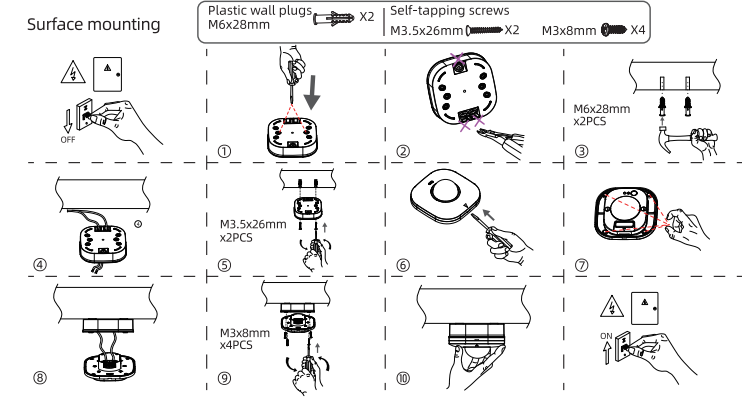
Tips: Above data is based on 1.6m height people radial moving towards sensor by 0.3m/s velocity in 81 m² open area for reference. If any variate changes, the detection range might be different.

WIRING INSTRUCTION

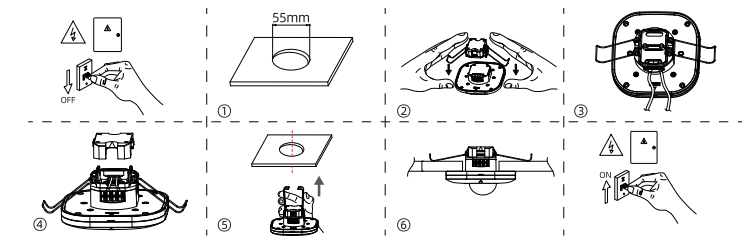


WIRING LAYOUT SUGGESTION :
 1. L N terminal stands for AC input , L' N stands for AC output, please wiring correctly
 2. One sensor's max loading capacity is 800w resistive loading and 400w inductive loading for one single load. if you want connect more load in one loop, we recommend to add an AC contactor in our output LN terminal to avoid momentary surge overload.

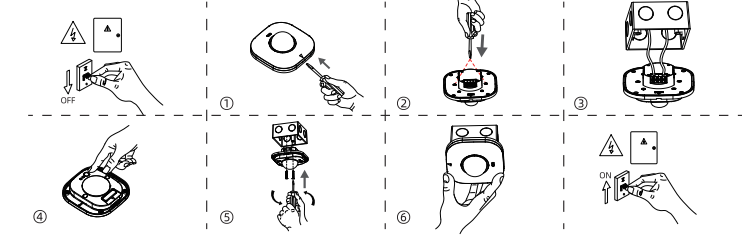
INSTALLATION



Flush Mounting



Mounted with EU 86 type switch socket box



PARAMETER SETTING

ON	OFF	100%	75%	50%	25%			
ON	OFF	5s	1min	3min	5min	10min	20min	30min
ON	OFF	5Lux	15Lux	30Lux	50Lux	100Lux	150Lux	Disable

Note :
 ① The upper position of the DIP switch is "ON" , and the lower position is "OFF" . The black square in the diagram indicates the switch is set to that side.
 ② Factory settings: Detection Sensitivity: 100%, Hold Time: 5s, Daylight Sensor: Disable.