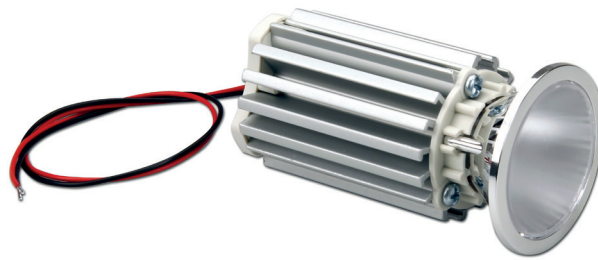


UP TO  
**157**  
lm/W

**L80 B20**

>150.000 h  
@ tc=80 °C



constant  
**CURRENT**

**CRI**  
>80  
>90

**Rated Current**  
250 mA  
300 mA  
350 mA

**Available (CCT) colour temperature**  
3000 K  
4000 K

2700 K on request - su richiesta  
3500 K on request - su richiesta  
5000 K on request - su richiesta  
5700 K on request - su richiesta  
6500 K on request - su richiesta

**Beam angle**  
20°  
35°  
55°

**Ambient temperature**  
ta: -40...+45 °C  
(Only for tc ≤ 90 °C)

**Module temperature**  
tc: 90 °C

**Standards compliance**  
EN 55015  
EN 61347-1  
EN 62031  
EN 62471

| Article Articolato          | Code Codice   | Temp. Color Colore | Typ Current (I typ) mA | Flux lm <sup>(1)</sup> (I typ 25°C) tc | Flux lm <sup>(1)</sup> (I typ 80°C) tc | V    | Power W | Efficacy Tc 25°C lm/W | Efficacy Tc 80°C lm/W | ta °C     | tc °C     | CRI | Beam angle |     |
|-----------------------------|---------------|--------------------|------------------------|--|--|------|---------|-----------------------|-----------------------|-----------|-----------|-----|------------|-----|
| <b>LED SPOT 1000 CRI 80</b> | 131297/830/20 | 3000K              | 250                    | 1260                                   | 1170                                   | 34,3 | 8,4     | 150                   | 142                   | -20...+45 | 90        | >80 | 20°        |     |
|                             |               |                    | 300                    | 1490                                   | 1390                                   | 34,7 | 10,1    | 146                   | 139                   | -20...+45 |           |     |            |     |
|                             |               |                    | 350                    | 1720                                   | 1595                                   | 35,2 | 12,9    | 143                   | 135                   | -20...+45 |           |     |            |     |
|                             | 131297/830/35 | 3000K              | 3000K                  | 250                                    | 1260                                   | 1170 | 34,3    | 8,4                   | 150                   | 142       | -20...+45 | 90  | >80        | 35° |
|                             |               |                    |                        | 300                                    | 1490                                   | 1390 | 34,7    | 10,1                  | 146                   | 139       | -20...+45 |     |            |     |
|                             |               |                    |                        | 350                                    | 1720                                   | 1595 | 35,2    | 12,9                  | 143                   | 135       | -20...+45 |     |            |     |
|                             | 131297/830/55 | 3000K              | 3000K                  | 250                                    | 1260                                   | 1170 | 34,3    | 8,4                   | 150                   | 142       | -20...+45 | 90  | >80        | 55° |
|                             |               |                    |                        | 300                                    | 1490                                   | 1390 | 34,7    | 10,1                  | 146                   | 139       | -20...+45 |     |            |     |
|                             |               |                    |                        | 350                                    | 1720                                   | 1595 | 35,2    | 12,9                  | 143                   | 135       | -20...+45 |     |            |     |
|                             | 131297/840/20 | 4000K              | 4000K                  | 250                                    | 1322                                   | 1230 | 34,3    | 8,4                   | 157                   | 150       | -20...+45 | 90  | >80        | 20° |
|                             |               |                    |                        | 300                                    | 1565                                   | 1455 | 34,7    | 10,1                  | 154                   | 146       | -20...+45 |     |            |     |
|                             |               |                    |                        | 350                                    | 1800                                   | 1675 | 35,2    | 12,9                  | 150                   | 142       | -20...+45 |     |            |     |
| 131297/840/35               | 4000K         | 4000K              | 250                    | 1322                                   | 1230                                   | 34,3 | 8,4     | 157                   | 150                   | -20...+45 | 90        | >80 | 35°        |     |
|                             |               |                    | 300                    | 1565                                   | 1455                                   | 34,7 | 10,1    | 154                   | 146                   | -20...+45 |           |     |            |     |
|                             |               |                    | 350                    | 1800                                   | 1675                                   | 35,2 | 12,9    | 150                   | 142                   | -20...+45 |           |     |            |     |
| 131297/840/55               | 4000K         | 4000K              | 250                    | 1322                                   | 1230                                   | 34,3 | 8,4     | 157                   | 150                   | -20...+45 | 90        | >80 | 55°        |     |
|                             |               |                    | 300                    | 1565                                   | 1455                                   | 34,7 | 10,1    | 154                   | 146                   | -20...+45 |           |     |            |     |
|                             |               |                    | 350                    | 1800                                   | 1675                                   | 35,2 | 12,9    | 150                   | 142                   | -20...+45 |           |     |            |     |
| <b>LED SPOT 1000 CRI 90</b> | 131297/930/20 | 3000K              | 250                    | 1080                                   | 1002                                   | 34,3 | 8,4     | 129                   | 122                   | -20...+45 | 90        | >90 | 20°        |     |
|                             |               |                    | 300                    | 1280                                   | 1190                                   | 34,7 | 10,1    | 125                   | 119                   | -20...+45 |           |     |            |     |
|                             |               |                    | 350                    | 1470                                   | 1370                                   | 35,2 | 12,9    | 122                   | 116                   | -20...+45 |           |     |            |     |
|                             | 131297/930/35 | 3000K              | 3000K                  | 250                                    | 1080                                   | 1002 | 34,3    | 8,4                   | 129                   | 122       | -20...+45 | 90  | >90        | 35° |
|                             |               |                    |                        | 300                                    | 1280                                   | 1190 | 34,7    | 10,1                  | 125                   | 119       | -20...+45 |     |            |     |
|                             |               |                    |                        | 350                                    | 1470                                   | 1370 | 35,2    | 12,9                  | 122                   | 116       | -20...+45 |     |            |     |
|                             | 131297/930/55 | 3000K              | 3000K                  | 250                                    | 1080                                   | 1002 | 34,3    | 8,4                   | 129                   | 122       | -20...+45 | 90  | >90        | 55° |
|                             |               |                    |                        | 300                                    | 1280                                   | 1190 | 34,7    | 10,1                  | 125                   | 119       | -20...+45 |     |            |     |
|                             |               |                    |                        | 350                                    | 1470                                   | 1370 | 35,2    | 12,9                  | 122                   | 116       | -20...+45 |     |            |     |
|                             | 131297/940/20 | 4000K              | 4000K                  | 250                                    | 1133                                   | 1053 | 34,3    | 8,4                   | 135                   | 128       | -20...+45 | 90  | >90        | 20° |
|                             |               |                    |                        | 300                                    | 1340                                   | 1245 | 34,7    | 10,1                  | 132                   | 125       | -20...+45 |     |            |     |
|                             |               |                    |                        | 350                                    | 1545                                   | 1435 | 35,2    | 12,9                  | 128                   | 122       | -20...+45 |     |            |     |
| 131297/940/35               | 4000K         | 4000K              | 250                    | 1133                                   | 1053                                   | 34,3 | 8,4     | 135                   | 128                   | -20...+45 | 90        | >90 | 35°        |     |
|                             |               |                    | 300                    | 1340                                   | 1245                                   | 34,7 | 10,1    | 132                   | 125                   | -20...+45 |           |     |            |     |
|                             |               |                    | 350                    | 1545                                   | 1435                                   | 35,2 | 12,9    | 128                   | 122                   | -20...+45 |           |     |            |     |
| 131297/940/55               | 4000K         | 4000K              | 250                    | 1133                                   | 1053                                   | 34,3 | 8,4     | 135                   | 128                   | -20...+45 | 90        | >90 | 55°        |     |
|                             |               |                    | 300                    | 1340                                   | 1245                                   | 34,7 | 10,1    | 132                   | 125                   | -20...+45 |           |     |            |     |
|                             |               |                    | 350                    | 1545                                   | 1435                                   | 35,2 | 12,9    | 128                   | 122                   | -20...+45 |           |     |            |     |

<sup>(1)</sup> The written flux includes the 20% losses due to the reflector - Il flusso riportato include la perdita del 20% dovuta al riflettore

### Main features

- LED SPOT for built-in use.
- Polycarbonate spotlight 50mm diameter.
- PMMA diffusing or transparent lens to cover the spotlight.
- Minimum colour tolerance: 3MacAdam (3SDCM).
- Perfect light uniformity.
- Anodized aluminium heat sink.
- Provided with power wires and tear-proof cable clamps.
- Emitting angle: 20°/35°/55°.
- High efficiency of the system in combination with TCI drivers.
- The use is guaranteed in combination with TCI drivers only.

### Caratteristiche principali

- SPOT LED da incorporare.
- Riflettore in policarbonato Diametro 50 mm.
- Lente diffondente o trasparente in PMMA a copertura del riflettore.
- Minima tolleranza di colore: 3MacAdam (3SDCM).
- Perfetta uniformità di luce.
- Dissipatore in alluminio anodizzato.
- Provvisto di cavi di alimentazione e fissacavo antistrappo.
- Angolo di emissione: 20°/35°/55°.
- Alta efficienza del sistema in combinazione con driver TCI.
- L'utilizzo è garantito in combinazione con driver TCI.

**7 YEARS WARRANTY**  
3% FAILURE RATE

**10 YEARS WARRANTY**  
5% FAILURE RATE

PRODUCER'S LIABILITY  
**TCI**

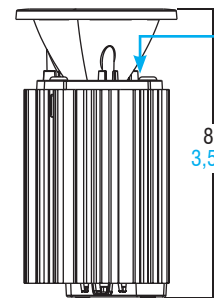
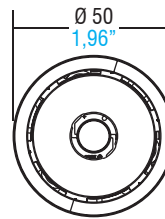
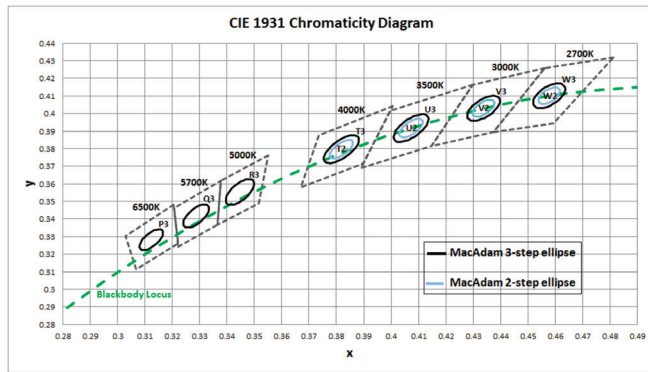
WARRANTY 10 YEARS  
ACCORDING TO THE EUROPEAN CONDITIONS

## LED spots

### Technical features - Caratteristiche tecniche

Chromaticity region & Coordinates ( $I_f=360\text{ mA}$ ,  $T_j=85\text{ °C}$ )

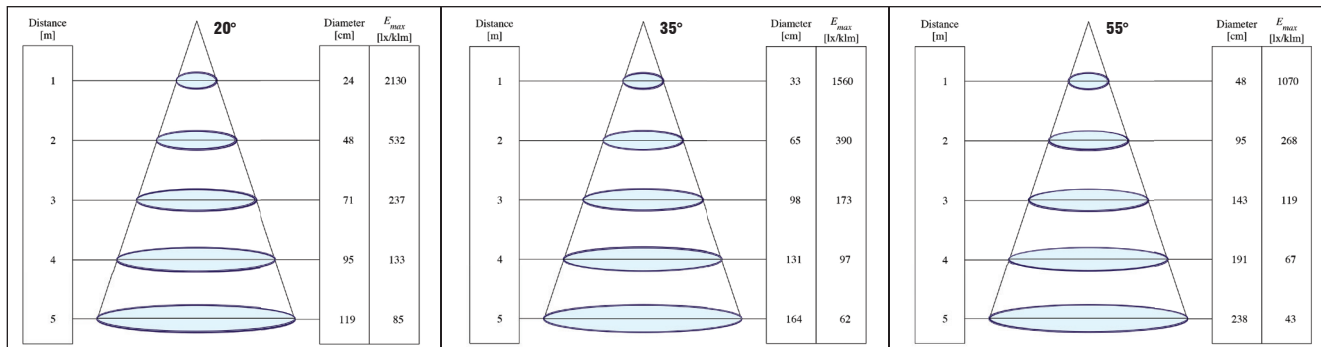
**LED SPOT 1000** (Weight/Peso **4,58 oz.** / gr. 130 - Pcs/Pezzi 20)



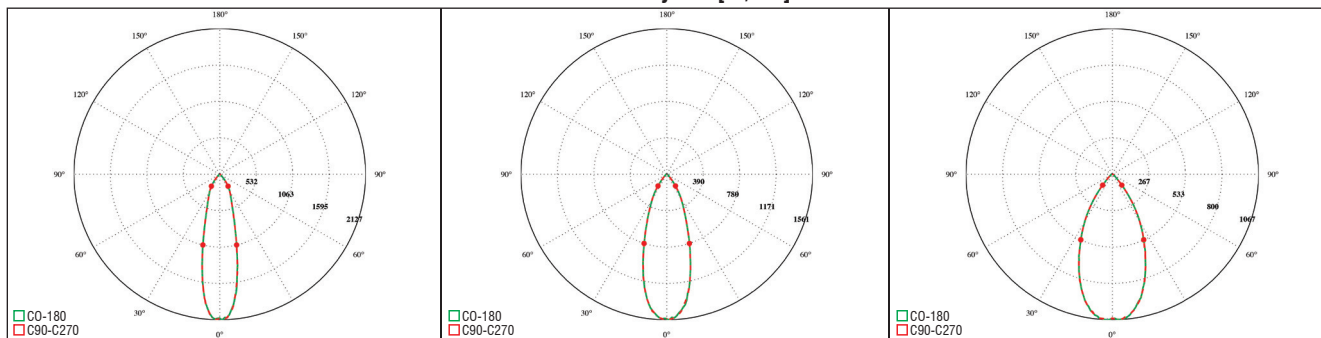
The **tc point** is on the welding point between the COB and the black wire

**tc point** è preso sul punto di saldatura tra piazzola COB e filo nero

### Illuminance Diagram [Lx/klm]



### Polar Intensity Plot [cd/klm]



I dati indicati sono stati rilevati a CCT 4000K CRI>90 @350mA, Tc=80°C

### LED driver choice table - Tabella di scelta driver

| Article       | Current | Power | Standard Driver  |               | Standard Driver PFC>0,9 |              | Dimmable 1-10V & PUSH |               | Dimmable DALI  |               |
|---------------|---------|-------|------------------|---------------|-------------------------|--------------|-----------------------|---------------|----------------|---------------|
|               |         |       | Article          | Code          | Article                 | Code         | Article               | Code          | Article        | Code          |
| LED SPOT 1000 | 250     | 8,7   | MP 15            | 122360        | UNIVERSALE 20           | 122201       | MINIJOLLY LC          | 123401-151401 | MINIJOLLY DALI | 125403-151403 |
|               |         |       | DCC 10W 250mA US | 122358        | UNIVERSALE LC           | 122203       |                       |               |                |               |
|               | 300     | 10,6  | MP 15            | 122360        | UNIVERSALE LC           | 122203       | MINIJOLLY LC          | 123401-151401 | -              | -             |
|               |         |       | DCC 15W 350mA US | 122350        | UNIVERSALE 20           | 122201       | MINIJOLLY             | 125400-151400 | MINIJOLLY DALI | 125403-151403 |
| 350           | 12,5    | MP 15 | 122360           | UNIVERSALE LC | 122203                  | MINIJOLLY LC | 123401-151401         |               |                |               |

| Article          | Code          | Rated Voltage | P out W <sup>(1)</sup> | V out | dimension (mm) | Ø mm | Efficiency $\eta$ (100%) <sup>(1)</sup> | ta °C  | tc °C | Power Factor $\lambda$ | Dimmable       |
|------------------|---------------|---------------|------------------------|-------|----------------|------|---|--------|-------|------------------------|----------------|
| DCC 10W 250mA    | 122358        | 110-240       | 10                     | 43    | 115x34x19      | 40   | 73                                      | -25+50 | 75    | 0,6 C                  | NO             |
| DCC 15W 350mA    | 122350        | 110-240       | 15 (10)                | 43    | 115x34x19      | 40   | 77                                      | -25+45 | 75    | 0,6 C                  | NO             |
| MP 15            | 122360        | 100-240       | 15 (10)                | 41,5  | 115x34x19      | 40   | 82                                      | -25+50 | 75    | 0,6 C                  | NO             |
| UNIVERSALE 20    | 122201        | 220-240       | 20                     | 57    | 110x52x22      | 55   | >88                                     | -25+50 | 80    | 0,95                   | NO             |
| UNIVERSALE 20 LC | 122203        | 220-240       | 20                     | 55    | 110x52x22      | 55   | >87                                     | -25+50 | 75    | 0,95                   | NO             |
| MINIJOLLY        | 125400-151400 | 110-240       | 20                     | 43    | 110x52x22      | 55   | >87                                     | -25+50 | 80    | 0,95                   | 1...10V - PUSH |
| MINIJOLLY LC     | 123401-151401 | 110-240       | 20                     | 43    | 110x52x22      | 55   | >87                                     | -25+45 | 75    | 0,95                   | 1...10V - PUSH |
| MINIJOLLY DALI   | 125403-151403 | 110-240       | 20                     | 43    | 110x52x22      | 55   | >87                                     | -25+45 | 75    | 0,95                   | DALI           |

<sup>(1)</sup> Referred to  $V_{in} = 230\text{ V}$ , 100% load - Riferito a  $V_{in} = 230\text{ V}$ , carico 100%

For additional technical informations please visit our website: [www.tci.it](http://www.tci.it)