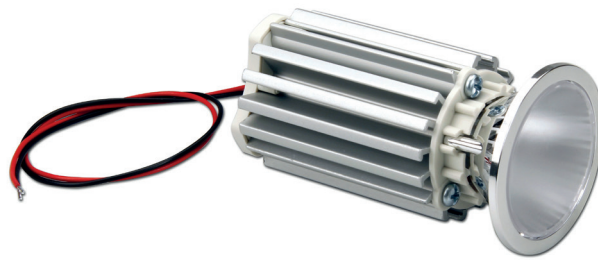


UP TO
166
lm/W

**L80
B20**

>150.000 h
@ tc=80 °C



constant
CURRENT

CRI
>80
>90

Rated Current
150 mA
200 mA
250 mA

**Available (CCT)
colour temperature**
3000 K
4000 K

2700 K on request - su richiesta
3500 K on request - su richiesta
5000 K on request - su richiesta
5700 K on request - su richiesta
6500 K on request - su richiesta

Beam angle
20°
35°
55°

Ambient temperature
ta: -40...+45 °C
(Only for tc ≤ 90 °C)

Module temperature
tc: 90 °C

Standards compliance
EN 55015
EN 61347-1
EN 62031
EN 62471

| Article Articolo | Code Codice | Temp. Color Colore | Typ Current (I typ) mA | Flux lm ⁽¹⁾ (I typ 25°C) tc | Flux lm ⁽¹⁾ (I typ 80°C) tc | V | Power W | Efficacy Tc 25°C lm/W | Efficacy Tc 80°C lm/W | ta °C | tc °C | CRI | Beam angle | |
|--------------------------------|----------------|--------------------------|------------------------------|--|--|------|------------|-----------------------------|-----------------------------|-----------|-----------|-----|---------------|-----|
| LED SPOT 600 CRI 80 | 131296/830/20 | 3000K | 150 | 774 | 720 | 33,3 | 4,9 | 158 | 150 | -20...+45 | 90 | >80 | 20° | |
| | | | 200 | 1020 | 948 | 33,3 | 6,6 | 154 | 146 | -20...+45 | | | | |
| | | | 250 | 1259 | 1170 | 33,3 | 8,4 | 150 | 142 | -20...+45 | | | | |
| | 131296/830/35 | 3000K | 3000K | 150 | 774 | 720 | 33,3 | 4,9 | 158 | 150 | -20...+45 | 90 | >80 | 35° |
| | | | | 200 | 1020 | 948 | 33,3 | 6,6 | 154 | 146 | -20...+45 | | | |
| | | | | 250 | 1259 | 1170 | 33,3 | 8,4 | 150 | 142 | -20...+45 | | | |
| | 131296/830/55 | 3000K | 3000K | 150 | 774 | 720 | 33,3 | 4,9 | 158 | 150 | -20...+45 | 90 | >80 | 55° |
| | | | | 200 | 1020 | 948 | 33,3 | 6,6 | 154 | 146 | -20...+45 | | | |
| | | | | 250 | 1259 | 1170 | 33,3 | 8,4 | 150 | 142 | -20...+45 | | | |
| | 131296/840/20 | 4000K | 4000K | 150 | 813 | 756 | 33,3 | 4,9 | 166 | 157 | -20...+45 | 90 | >80 | 20° |
| | | | | 200 | 1070 | 995 | 33,3 | 6,6 | 162 | 153 | -20...+45 | | | |
| | | | | 250 | 1322 | 1230 | 33,3 | 8,4 | 157 | 150 | -20...+45 | | | |
| 150 | | | | 813 | 756 | 33,3 | 4,9 | 166 | 157 | -20...+45 | | | | |
| 200 | | | | 1070 | 995 | 33,3 | 6,6 | 162 | 153 | -20...+45 | | | | |
| 250 | | | | 1322 | 1230 | 33,3 | 8,4 | 157 | 150 | -20...+45 | | | | |
| 131296/840/35 | 4000K | 4000K | 150 | 813 | 756 | 33,3 | 4,9 | 166 | 157 | -20...+45 | 90 | >80 | 35° | |
| | | | 200 | 1070 | 995 | 33,3 | 6,6 | 162 | 153 | -20...+45 | | | | |
| | | | 250 | 1322 | 1230 | 33,3 | 8,4 | 157 | 150 | -20...+45 | | | | |
| | | | 150 | 813 | 756 | 33,3 | 4,9 | 166 | 157 | -20...+45 | | | | |
| | | | 200 | 1070 | 995 | 33,3 | 6,6 | 162 | 153 | -20...+45 | | | | |
| | | | 250 | 1322 | 1230 | 33,3 | 8,4 | 157 | 150 | -20...+45 | | | | |
| 131296/840/55 | 4000K | 4000K | 150 | 813 | 756 | 33,3 | 4,9 | 166 | 157 | -20...+45 | 90 | >80 | 55° | |
| | | | 200 | 1070 | 995 | 33,3 | 6,6 | 162 | 153 | -20...+45 | | | | |
| | | | 250 | 1322 | 1230 | 33,3 | 8,4 | 157 | 150 | -20...+45 | | | | |
| | | | 150 | 663 | 617 | 33,3 | 4,9 | 135 | 128 | -20...+45 | | | | |
| | | | 200 | 874 | 812 | 33,3 | 6,6 | 132 | 125 | -20...+45 | | | | |
| | | | 250 | 1078 | 1002 | 33,3 | 8,4 | 129 | 122 | -20...+45 | | | | |
| LED SPOT 600 CRI 90 | 131296/930/20 | 3000K | 150 | 663 | 617 | 33,3 | 4,9 | 135 | 128 | -20...+45 | 90 | >90 | 20° | |
| | | | 200 | 874 | 812 | 33,3 | 6,6 | 132 | 125 | -20...+45 | | | | |
| | | | 250 | 1078 | 1002 | 33,3 | 8,4 | 129 | 122 | -20...+45 | | | | |
| | 131296/930/35 | 3000K | 3000K | 150 | 663 | 617 | 33,3 | 4,9 | 135 | 128 | -20...+45 | 90 | >90 | 35° |
| | | | | 200 | 874 | 812 | 33,3 | 6,6 | 132 | 125 | -20...+45 | | | |
| | | | | 250 | 1078 | 1002 | 33,3 | 8,4 | 129 | 122 | -20...+45 | | | |
| | 131296/930/55 | 3000K | 3000K | 150 | 663 | 617 | 33,3 | 4,9 | 135 | 128 | -20...+45 | 90 | >90 | 55° |
| | | | | 200 | 874 | 812 | 33,3 | 6,6 | 132 | 125 | -20...+45 | | | |
| | | | | 250 | 1078 | 1002 | 33,3 | 8,4 | 129 | 122 | -20...+45 | | | |
| | 131296/940/20 | 4000K | 4000K | 150 | 697 | 648 | 33,3 | 4,9 | 142 | 135 | -20...+45 | 90 | >90 | 20° |
| | | | | 200 | 918 | 853 | 33,3 | 6,6 | 138 | 131 | -20...+45 | | | |
| | | | | 250 | 1133 | 1053 | 33,3 | 8,4 | 135 | 128 | -20...+45 | | | |
| 131296/940/35 | 4000K | 4000K | 150 | 697 | 648 | 33,3 | 4,9 | 142 | 135 | -20...+45 | 90 | >90 | 35° | |
| | | | 200 | 918 | 853 | 33,3 | 6,6 | 138 | 131 | -20...+45 | | | | |
| | | | 250 | 1133 | 1053 | 33,3 | 8,4 | 135 | 128 | -20...+45 | | | | |
| 131296/940/55 | 4000K | 4000K | 150 | 697 | 648 | 33,3 | 4,9 | 142 | 135 | -20...+45 | 90 | >90 | 55° | |
| | | | 200 | 918 | 853 | 33,3 | 6,6 | 138 | 131 | -20...+45 | | | | |
| | | | 250 | 1133 | 1053 | 33,3 | 8,4 | 135 | 128 | -20...+45 | | | | |

⁽¹⁾ The written flux includes the 20% losses due to the reflector - Il flusso riportato include la perdita del 20% dovuta al riflettore

Main features

- LED SPOT for built-in use.
- Polycarbonate spotlight 50mm diameter.
- PMMA diffusing or transparent lens to cover the spotlight.
- Minimum colour tolerance: 3MacAdam (3SDCM).
- Perfect light uniformity.
- Anodized aluminium heat sink.
- Provided with power wires and tear-proof cable clamps.
- Emitting angle: 20°/35°/55°.
- High efficiency of the system in combination with TCI drivers.
- The use is guaranteed in combination with TCI drivers only.

Caratteristiche principali

- SPOT LED da incorporare.
- Riflettore in policarbonato Diametro 50 mm.
- Lente diffondente o trasparente in PMMA a copertura del riflettore.
- Minima tolleranza di colore: 3MacAdam (3SDCM).
- Perfetta uniformità di luce.
- Dissipatore in alluminio anodizzato.
- Provvisto di cavi di alimentazione e fissacavo antistrappo.
- Angolo di emissione: 20°/35°/55°.
- Alta efficienza del sistema in combinazione con driver TCI.
- L'utilizzo è garantito in combinazione con driver TCI.

7
YEARS
WARRANTY
3% FAILURE RATE

10
YEARS
WARRANTY
5% FAILURE RATE

PRODUCER'S LIABILITY
TCI

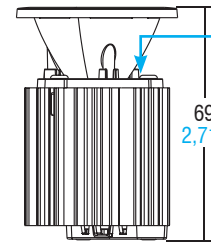
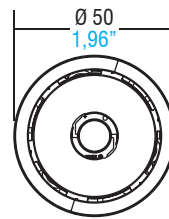
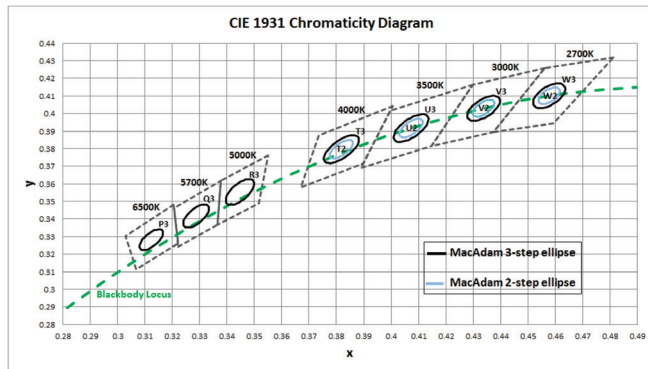
WARRANTY 10 YEARS
ACCORDING TO
THE EUROPEAN
CONDITIONS

LED spots

Technical features - Caratteristiche tecniche

Chromaticity region & Coordinates ($I_f = 360 \text{ mA}$, $T_j = 85 \text{ °C}$)

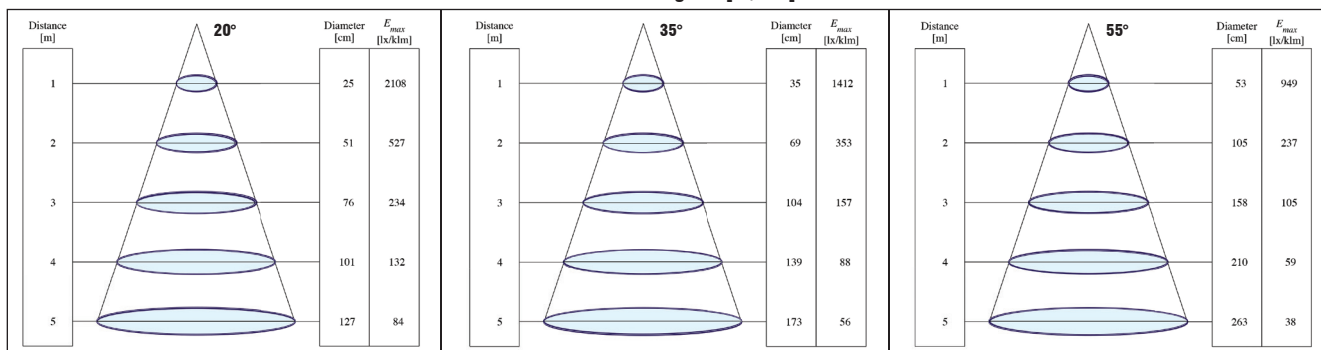
LED SPOT 600 (Weight/Peso 3,17 oz. / gr. 90 - Pcs/Pezzi 20)



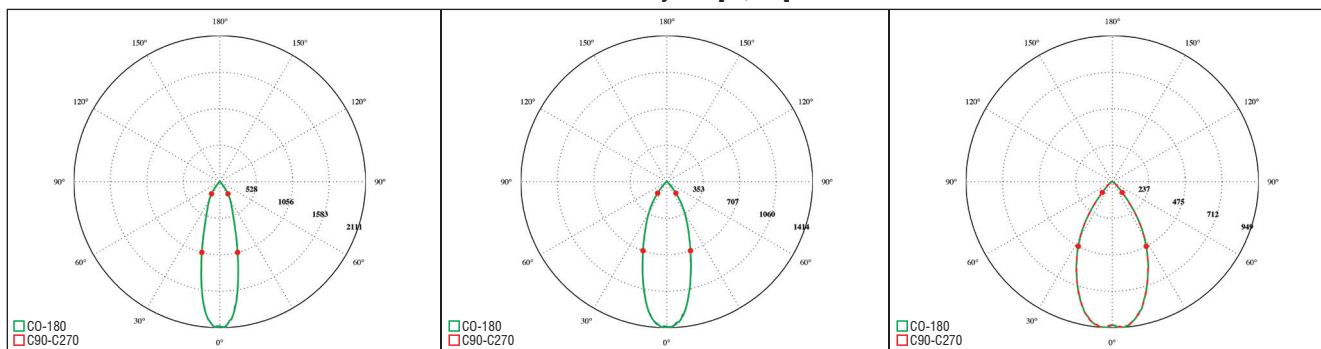
The **tc point** is on the welding point between the COB and the black wire

tc point è preso sul punto di saldatura tra piazzola COB e filo nero

Illuminance Diagram [Lx/klm]



Polar Intensity Plot [cd/klm]



I dati indicati sono stati rilevati a CCT 4000K CRI>90 @250mA, $T_c = 80 \text{ °C}$

LED driver choice table - Tabella di scelta driver

| Article | Current | Power | Standard Driver | | Standard Driver PFC > 0,9 | | Dimmable 1-10V & PUSH | | Dimmable DALI | |
|--------------|---------|-------|------------------|--------|---------------------------|--------|-----------------------|---------------|----------------|---------------|
| | | | Article | Code | Article | Code | Article | Code | Article | Code |
| LED SPOT 600 | 150 | 5 | MP 15 | 122360 | UNIVERSALE LC | 122203 | MINIJOLLY LC | 123401-151401 | - | - |
| | 200 | 7 | MP 15 | 122360 | UNIVERSALE LC | 122203 | MINIJOLLY LC | 123401-151401 | - | - |
| | 250 | 8,7 | MP 15 | 122360 | UNIVERSALE 20 | 122201 | MINIJOLLY LC | 123401-151401 | MINIJOLLY DALI | 125403-151403 |
| | | | DCC 10W 250mA US | 122358 | UNIVERSALE LC | 122203 | | | | |

| Article | Code | Rated Voltage | P out W ⁽¹⁾ | V out | dimension (mm) | Ø mm | Efficiency (100%) ⁽¹⁾ | ta °C | tc °C | Power Factor λ | Dimmable |
|------------------|---------------|---------------|------------------------|-------|----------------|------|----------------------------------|--------|-------|----------------|----------------|
| DCC 10W 250mA | 122358 | 110-240 | 10 | 43 | 115x34x19 | 40 | 73 | -25+50 | 75 | 0,6 C | NO |
| MP 15 | 122360 | 100-240 | 15 (10) | 41,5 | 115x34x19 | 40 | 82 | -25+50 | 75 | 0,6 C | NO |
| UNIVERSALE 20 LC | 122203 | 220-240 | 20 | 55 | 110x52x22 | 55 | >87 | -25+50 | 75 | 0,95 | NO |
| MINIJOLLY | 125400-151400 | 110-240 | 20 | 43 | 110x52x22 | 55 | >87 | -25+50 | 80 | 0,95 | 1...10V - PUSH |
| MINIJOLLY LC | 123401-151401 | 110-240 | 20 | 43 | 110x52x22 | 55 | >87 | -25+45 | 75 | 0,95 | 1...10V - PUSH |
| MINIJOLLY DALI | 125403-151403 | 110-240 | 20 | 43 | 110x52x22 | 55 | >87 | -25+45 | 75 | 0,95 | DALI |

⁽¹⁾ Referred to $V_{in} = 230 \text{ V}$, 100% load - Riferito a $V_{in} = 230 \text{ V}$, carico 100%

For additional technical informations please visit our website: www.tci.it