

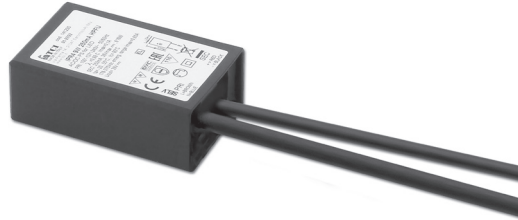
**Direct current electronic drivers**  
**Alimentatori elettronici in corrente continua**

Made in Italy 

constant **CURRENT** constant **VOLTAGE**

**RIPPLE FREE** Pst LM ≤ 1 SVM ≤ 0,4

UL-CLASS2 **EAC** c  **us**     **SELV 60V**  
CSA-LVLE PENDING PENDING



1-2kV DIFF. 2kV COMM.  

**Rated Voltage**  
**Tensione Nominale**  
100 ÷ 127 V <sup>(2)</sup>  
100 ÷ 240 V

**Frequency**  
**Frequenza**  
50-60 Hz

**AC Operation range**  
**Tensione di utilizzo AC**  
90 ÷ 264 V

**DC Operation range**  
**Tensione di utilizzo DC**  
(see page info15)  
176 ÷ 275 V

**Power - Potenza**  
1 ÷ 10 W

**iTHD**  
≥ 40% <sup>(1)</sup>

**Output current ripple**  
≤ 3% <sup>(1)</sup>

**Standards compliance**  
CSA-C22.2 n° 250.13  
EN 55015  
EN 61000-3-2  
EN 61000-3-3  
EN 61347-1  
EN 61347-2-13  
EN 61547  
VDE 0710-T14  
UL 8750

**Max. pcs for CB B16A**  
(see page info17)  
50 pcs

**In rush current**  
20A 170µsec

| Article<br>Articolo        | Code<br>Codice | P out<br>W           | V out<br>DC <sup>(1)</sup> | I out<br>DC  | U out<br>V | ta<br>°C                     | tc<br>°C | λ max.<br>Power<br>Factor   | η max.<br>Efficiency <sup>(1)</sup> |
|----------------------------|----------------|----------------------|----------------------------|--------------|------------|------------------------------|----------|-----------------------------|-------------------------------------|
| <b>IPR4 9W 250mA HPFU</b>  | 141230         | 6 <sup>(2)</sup> /9  | 2...36                     | 250 mA cost. | 39         | -20...+55                    | 80       | 0,88 C                      | > 79 %                              |
| <b>IPR4 8W 350mA HPFU</b>  | 141233         | 6 <sup>(2)</sup> /8  | 2...23                     | 350 mA cost. | 24         | -20...+55 <sup>(2)</sup> /60 | 80       | 0,87 C                      | > 78 %                              |
| <b>IPR4 10W 350mA HPFU</b> | 141234         | 6 <sup>(2)</sup> /10 | 2...30                     | 350 mA cost. | 32         | -20...+55                    | 80       | 0,88 C                      | > 79 %                              |
| <b>IPR4 6W 500mA HPFU</b>  | 141231         | 6                    | 2...12,6                   | 500 mA cost. | 13         | -25...+50 <sup>(2)</sup> /55 | 75       | 0,8 (0,9 <sup>(2)</sup> ) C | > 72 %                              |
| <b>IPR4 8W 700mA HPFU</b>  | 141232         | 6 <sup>(2)</sup> /8  | 2...12                     | 700 mA cost. | 13         | -20...+45                    | 80       | 0,87 C                      | > 77 %                              |

<sup>(1)</sup> Referred to V<sub>in</sub> = 230 V, 100% load - Riferito a V<sub>in</sub> = 230 V, carico 100%

**Light output level in DC operation: Factory default 100% EOfi=1**

**Livello di emissione luminosa in funzionamento DC: Impostazioni di fabbrica 100% EOfi=1**

**6.**

IP rated drivers  
Alimentatori protetti IP

**Features**

- **Not dimmable driver.**
- Independent driver with IP68 case (see page info7 for the correct connection of connecting leads).
- Class II protection against electric shock for direct or indirect contact.
- Supplied with connecting leads (length 400 mm) on primary and secondary circuits for connection.
- Active Power Factor Corrector.
- Current regulation +8%...+5 % including temperature variations.
- Protections:
  - against overheating and short circuits;
  - against mains voltage spikes;
  - against overloads.

**Caratteristiche**

- **Alimentatore non regolabile.**
- Alimentatore indipendente con case IP68 (vedi pagina info7 per il corretto collegamento dei cavi di connessione).
- Protetto in classe II contro le scosse elettriche per contatti diretti e indiretti.
- Fornito di cavi di connessione (lunghezza cavi 400 mm) su primario e secondario per il collegamento.
- PFC attivo.
- Corrente regolata -8%...+5 % incluse variazioni di temperatura.
- Protezioni:
  - termica e cortocircuito;
  - contro le extra-tensioni di rete;
  - contro i sovraccarichi.

**7 YEARS WARRANTY** 3% FAILURE RATE **10 YEARS WARRANTY** 5% FAILURE RATE

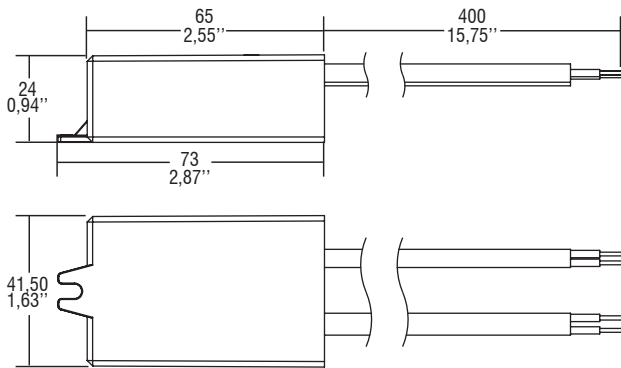
PRODUCER'S LIABILITY **10 YEARS WARRANTY** ACCORDING TO THE EUROPEAN CONDITIONS

The data shown are preliminary and may change - I dati riportati sono preliminari e potrebbero subire variazioni

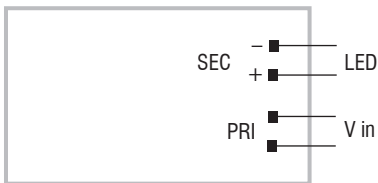
## Direct current electronic drivers Alimentatori elettronici in corrente continua

Made in Italy

CASE  
**IP 68** Weight - Peso gr. 90 / 3,17 oz.  
Pcs - Pezzi 50



**Wiring diagram - Schema di collegamento** (Max. LED distance at page info8 - Massima distanza LED a pagina info8)



# 6.

IP rated drivers  
Alimentatori protetti IP