

### INGRESSO

- Nominale AC: 220/240 Vac -10/+10 % 50/60Hz.  
Range DC: 176-275Vdc. Morsettiera 1 x 0.5... 1.5 mm<sup>2</sup>.
- Corrente massima: 0.30 A.
- Fattore di potenza  $\lambda$ : 0.9 @ Pout >18W
- Armoniche corrente assorbita: secondo EN 61000-3-2.
- Inrush current: 5A 50uS.

### USCITA

- Isolamento SELV.
- Morsettiera 1 x 0,5...1.5 mm<sup>2</sup>.
- Selezione corrente e tensione di uscita tramite NFC e tool software di programmazione.
- Potenza massima e precisione di corrente:  
16,2W @ 300mA  $\pm$  5% (20...54V)  
21,6W @ 400mA  $\pm$  5% (20...54V)  
27,0W @ 500mA  $\pm$  4% (15...54V)  
32,4W @ 600mA  $\pm$  4% (15...54V)  
37,8W @ 700mA  $\pm$  4% (10...54V)  
43,2W @ 800mA  $\pm$  4% (10...54V)  
48,6W @ 900mA  $\pm$  4% (10...54V)  
52,0W @ 950mA  $\pm$  4% (10...54V)  
52,0W @ 1000mA  $\pm$  4% (10...52V)  
52,0W @ 1100mA  $\pm$  4% (10...47,5V)  
52,0W @ 1200mA  $\pm$  4% (10...43,5V)  
52,0W @ 1300mA  $\pm$  4% (10...40V)  
52,0W @ 1400mA  $\pm$  4% (10...37V)
- Tensione in uscita massima: <59 VDC.
- Efficienza massimo carico:  
89%@1,4A ; 91,5%@950mA.

### PROTEZIONI

- All'ingresso, contro sovratensioni impulsive di rete (secondo EN 61547).
- Protezione al corto circuito e al circuito aperto.
- Protezione al sovraccarico e di temperatura (C.5.a della EN 61347-1).
- All'ingresso, contro sovratensioni impulsive di rete (secondo EN 61547) fino a 2KV N-L , 4KV N-GND e 4KV L-GND.

### FILTRO ANTIDISTURBO EMI

- Secondo EN55015.

### AMBIENTE

- Temp. ambiente: -25...50 °C.
- tc = 80 °C.
- tc life 50000H = 80°C.
- Contenitore metallico IP20.

### INPUT

- Nominal AC: 220/240 Vac -10/+10 % 50/60Hz.  
Range DC: 176-275Vdc.
- Terminal block for up to 1 x 0.5...1.5 mm<sup>2</sup>.
- Max Input Current: 0.30A.
- Power factor  $\lambda$ : 0.9 @ Pout >18W.
- Harmonic content of mains current: according to EN 61000-3-2.
- Inrush current: 5A 50uS.

### OUTPUT

- SELV insulation on output.
- Terminal block for up to 1 x 0,5...1.5 mm<sup>2</sup>.
- Selection of current and voltage output through NFC and software programming tool.
- Max output power and current precision:  
16,2W @ 300mA  $\pm$  5% (20...54V)  
21,6W @ 400mA  $\pm$  5% (20...54V)  
27,0W @ 500mA  $\pm$  4% (15...54V)  
32,4W @ 600mA  $\pm$  4% (15...54V)  
37,8W @ 700mA  $\pm$  4% (10...54V)  
43,2W @ 800mA  $\pm$  4% (10...54V)  
48,6W @ 900mA  $\pm$  4% (10...54V)  
52,0W @ 950mA  $\pm$  4% (10...54V)  
52,0W @ 1000mA  $\pm$  4% (10...52V)  
52,0W @ 1100mA  $\pm$  4% (10...47,5V)  
52,0W @ 1200mA  $\pm$  4% (10...43,5V)  
52,0W @ 1300mA  $\pm$  4% (10...40V)  
52,0W @ 1400mA  $\pm$  4% (10...37V)
- Max. Output voltage: <59 VDC.
- Efficiency at full load:  
89%@1,4A ; 91,5%@950mA.

### PROTECTIONS

- Against input overvoltages from mains (according to EN61547).
- Against short circuit and open circuit.
- Thermal and overload protection (C.5.a EN 61347-1).
- Against input overvoltages from mains (according to EN61547) up to 2KV N-L , 4KV N-GND and 4KV L-GND.

### EMI

- According to EN55015.

### AMBIENT

- Ambient Temp.: -25...50 °C.
- Tc = 80 °C.
- tc life 50000H = 80°C.
- Metal case IP20.

ENTE EMITTENTE: DT Compilato \_\_\_\_\_ Visto \_\_\_\_\_

**SICUREZZA**

- Hi-pot test: 3kV, 100% per 2 sec.

**NORMATIVE**

- EN 61347-1 ; EN 61347-2-13 ; EN 61547 ; EN 55015 ; EN 61000-3-2 ; EN62384.
- KEMA KEUR / ENEC05 pending.

**DIMENSIONI**

- L=280mm / B=30 mm / H = 21 mm.

**SAFETY**

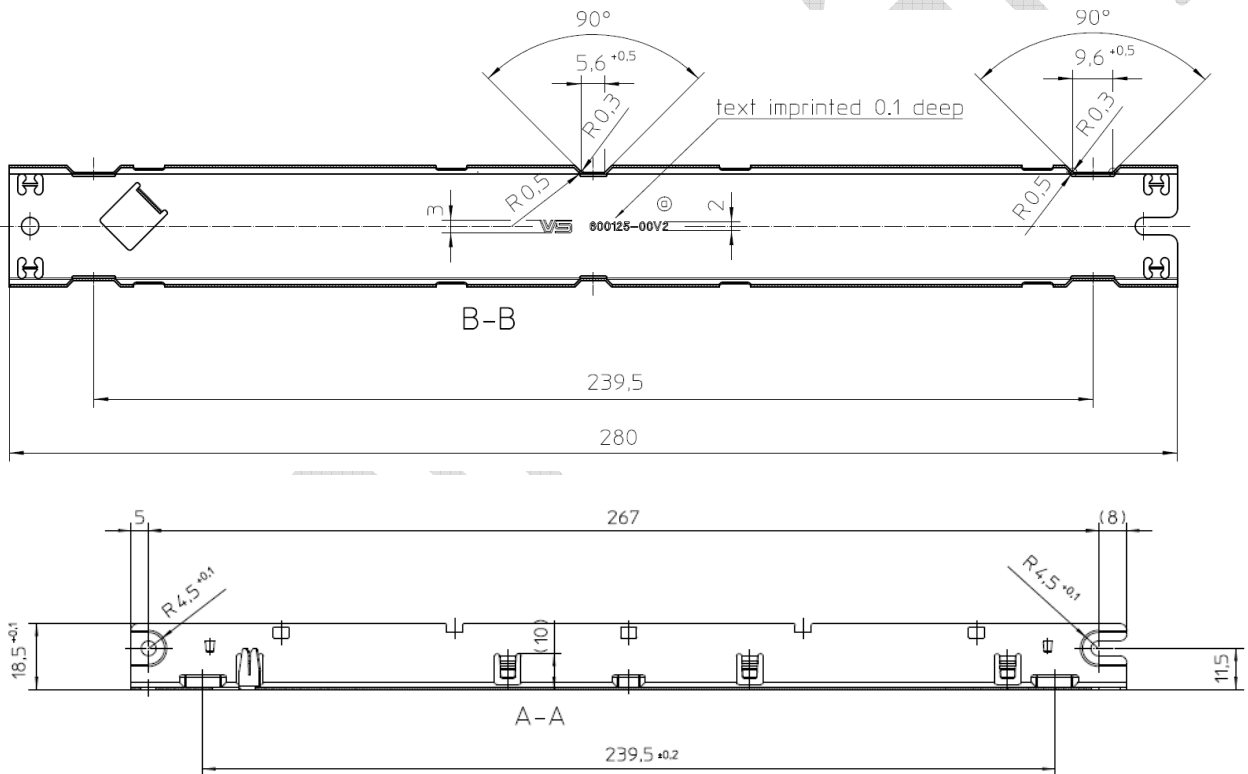
- Hi-pot test: 3kV, 100% per 2 sec

**STANDARDS**

- EN 61347-1 ; EN 61347-2-13 ; EN 61547 ; EN 55015 ; EN 61000-3-2 ; EN62384.
- KEMA KEUR / ENEC05 pending.

**DIMENSIONS**

- L=280mm / B=30 mm / H = 21 mm.



PRI



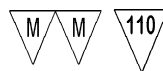
FW 131  
www.tci.it

MADE IN ITALY  
via Parma 14, 21047 Saronno(VA) Italy

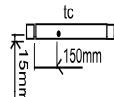
**DC SVM 52/300-1400 NFC**

AC/DC P/S for LED  
cod.127563

PRI: 220-240Vac 50-60Hz  
 $I_{max}=0,3A$ ;  $\lambda (P>18W)=0,9C$   
 SEC: 300-1400mA; 52Wmax  
 $U_{out}<60Vdc$   
 $t_a = -25...50^{\circ}C$ ;  $t_c = 80^{\circ}C$   
 176-275Vdc range x emerg. app.;  $I_{max}=0,3A$



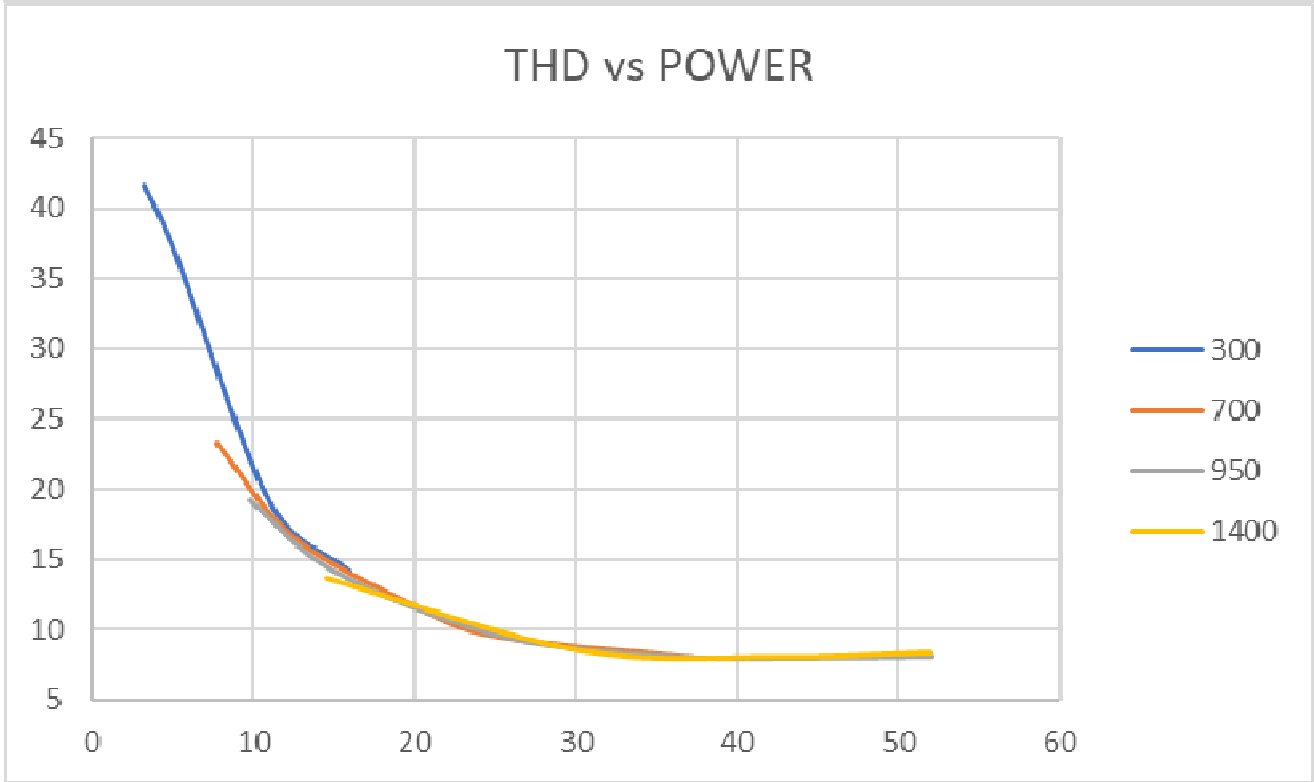
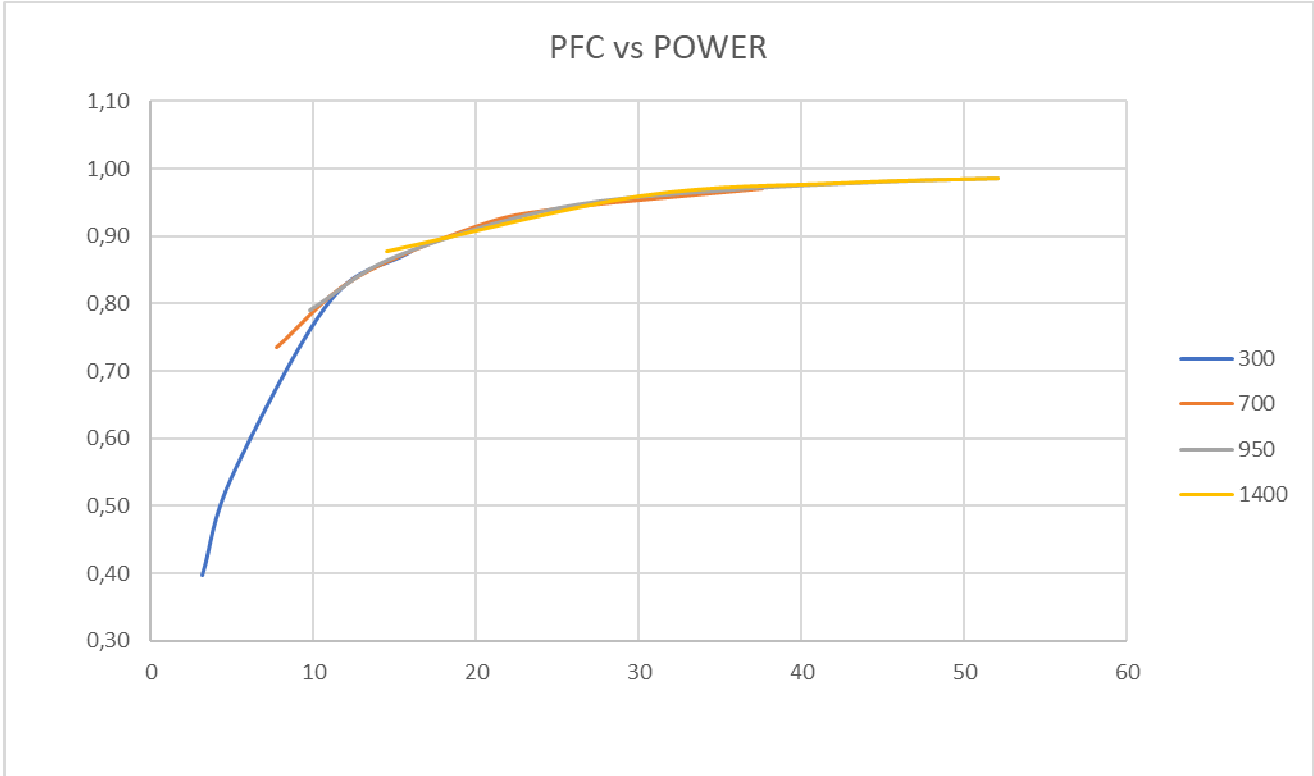
Z50/21



SELV

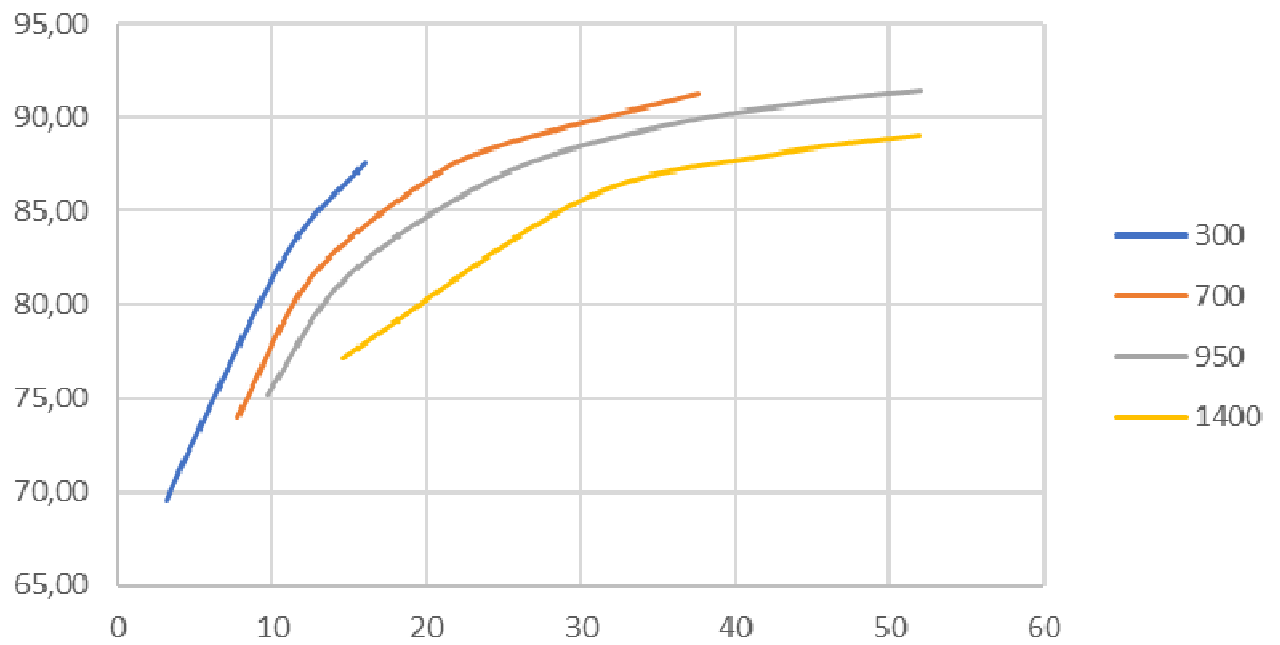


ENTE EMITTENTE: DT Compilato \_\_\_\_\_ Visto \_\_\_\_\_



ENTE EMITTENTE: \_\_\_\_\_ Compilato: \_\_\_\_\_ Visto: \_\_\_\_\_

### EFF vs POWER



ENTE EMITTENTE: \_\_\_\_\_ Compilato: \_\_\_\_\_ Visto: \_\_\_\_\_