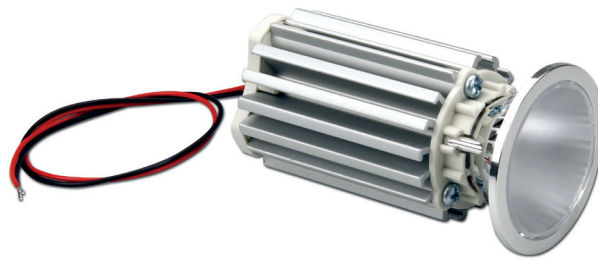


UP TO 170
lm/W

L80 B20
>150.000 h
@ tc=80 °C



constant
CURRENT

CRI
>80
>90

Rated Current
250 mA
300 mA
350 mA

Power
8,5 W
10,4 W
12,3 W

Available (CCT) colour temperature
3000 K
4000 K

6

LED SPOTS

2700 K on request - su richiesta
5000 K on request - su richiesta
5700 K on request - su richiesta
6500 K on request - su richiesta

Beam angle
20°
35°
55°

Ambient temperature
ta: -20...+45 °C
(Only for tc ≤ 90 °C)

Module temperature
tc max: 90 °C

Standards compliance
EN 55015
EN 61347-1
EN 61547
EN 62031
EN 62471

Article Articolò	Code Codice	Temp. Color Colore	Typ Current (I typ) mA	Flux lm ⁽¹⁾ (I typ 25°C) tc	Flux lm ⁽¹⁾ (I typ 80°C) tc	V	Power W	Efficacy Tc 25°C lm/W	Efficacy Tc 80°C lm/W	ta °C	tc °C	CRI	Beam angle	
LED SPOT 1000 CRI 80	128416/830/20	3000K	250	1134	1054	34,3	8,5	162	150	-20...+45	90	>80	20°	
			300	1344	1248	34,7	10,4	156	145	-20...+45				
			350	1547	1437	35,2	12,3	151	140	-20...+35				
	128416/830/35	3000K	3000K	250	1134	1054	34,3	8,5	162	150	-20...+45	90	>80	35°
				300	1344	1248	34,7	10,4	156	145	-20...+45			
				350	1547	1437	35,2	12,3	151	140	-20...+35			
	128416/830/55	3000K	3000K	250	1134	1054	34,3	8,5	162	150	-20...+45	90	>80	55°
				300	1344	1248	34,7	10,4	156	145	-20...+45			
				350	1547	1437	35,2	12,3	151	140	-20...+35			
	128416/840/20	4000K	4000K	250	1160	1053	34,3	8,5	170	158	-20...+45	90	>80	20°
				300	1362	1236	34,7	10,4	164	152	-20...+45			
				350	1553	1408	35,2	12,3	158	146	-20...+35			
128416/840/35	4000K	4000K	250	1160	1053	34,3	8,5	170	158	-20...+45	90	>80	35°	
			300	1362	1236	34,7	10,4	164	152	-20...+45				
			350	1553	1408	35,2	12,3	158	146	-20...+35				
128416/840/55	4000K	4000K	250	1160	1053	34,3	8,5	170	158	-20...+45	90	>80	55°	
			300	1362	1236	34,7	10,4	164	152	-20...+45				
			350	1553	1408	35,2	12,3	158	146	-20...+35				
LED SPOT 1000 CRI 90	128416/930/20	3000K	250	940	854	34,3	8,5	138	128	-20...+45	90	>90	20°	
			300	1103	1001	34,7	10,4	133	123	-20...+45				
			350	1258	1141	35,2	12,3	128	119	-20...+35				
	128416/930/35	3000K	3000K	250	940	854	34,3	8,5	138	128	-20...+45	90	>90	35°
				300	1103	1001	34,7	10,4	133	123	-20...+45			
				350	1258	1141	35,2	12,3	128	119	-20...+35			
	128416/930/55	3000K	3000K	250	940	854	34,3	8,5	138	128	-20...+45	90	>90	55°
				300	1103	1001	34,7	10,4	133	123	-20...+45			
				350	1258	1141	35,2	12,3	128	119	-20...+35			
	128416/940/20	4000K	4000K	250	994	903	34,3	8,5	146	135	-20...+45	90	>90	20°
				300	1167	1059	34,7	10,4	140	130	-20...+45			
				350	1330	1207	35,2	12,3	135	126	-20...+35			
128416/940/35	4000K	4000K	250	994	903	34,3	8,5	146	135	-20...+45	90	>90	35°	
			300	1167	1059	34,7	10,4	140	130	-20...+45				
			350	1330	1207	35,2	12,3	135	126	-20...+35				
128416/940/55	4000K	4000K	250	994	903	34,3	8,5	146	135	-20...+45	90	>90	55°	
			300	1167	1059	34,7	10,4	140	130	-20...+45				
			350	1330	1207	35,2	12,3	135	126	-20...+35				

⁽¹⁾ The written flux includes the 20% losses due to the reflector - Il flusso riportato include la perdita del 20% dovuta al riflettore

Main features

- LED SPOT for built-in use.
- Polycarbonate spotlight 50mm diameter.
- PMMA diffusing or transparent lens to cover the spotlight.
- Minimum colour tolerance: 3MacAdam (3SDCM).
- Perfect light uniformity.
- Anodized aluminium heat sink.
- Provided with power wires and tear-proof cable clamps.
- Emitting angle: 20°/35°/55°.
- High efficiency of the system in combination with TCI drivers.
- The use is guaranteed in combination with TCI drivers only.

Caratteristiche principali

- SPOT LED da incorporare.
- Riflettore in policarbonato Diametro 50 mm.
- Lente diffondente o trasparente in PMMA a copertura del riflettore.
- Minima tolleranza di colore: 3MacAdam (3SDCM).
- Perfetta uniformità di luce.
- Dissipatore in alluminio anodizzato.
- Provvisto di cavi di alimentazione e fissacavo antistrappo.
- Angolo di emissione: 20°/35°/55°.
- Alta efficienza del sistema in combinazione con driver TCI.
- L'utilizzo è garantito in combinazione con driver TCI.

7 YEARS WARRANTY
3% FAILURE RATE

10 YEARS WARRANTY
5% FAILURE RATE

PRODUCER'S LIABILITY
TCI

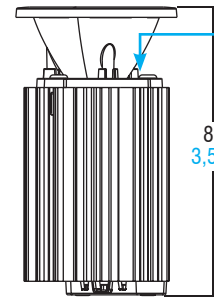
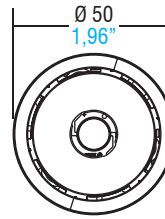
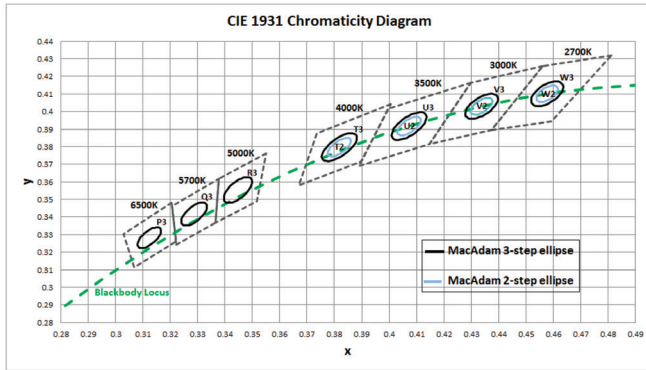
WARRANTY 10 YEARS
ACCORDING TO THE EUROPEAN CONSUMER 2014

LED spots

Technical features - Caratteristiche tecniche

Chromaticity region & Coordinates ($I_f=360\text{ mA}$, $T_j=85\text{ °C}$)

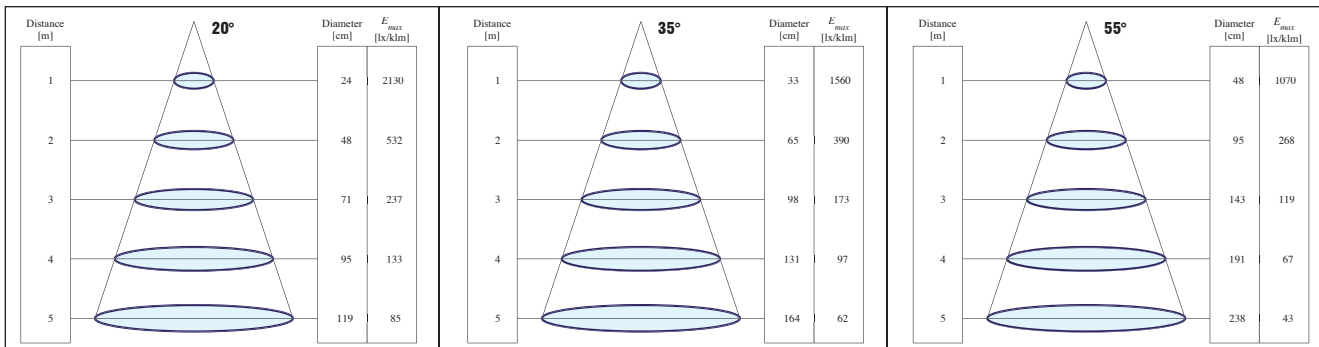
LED SPOT 1000 (Weight/Peso 4,58 oz. / gr. 130 - Pcs/Pezzi 1)



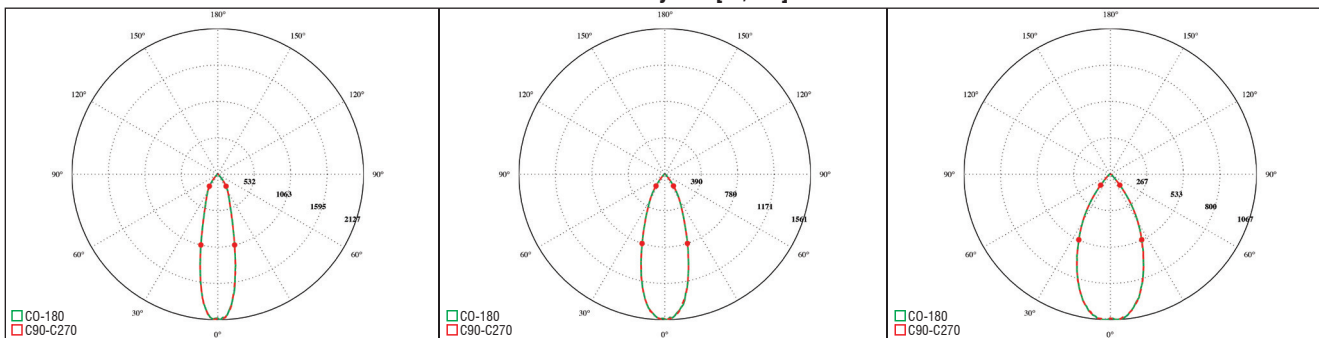
The **tc point** is on the welding point between the COB and the black wire

tc point è preso sul punto di saldatura tra piazzola COB e filo nero

Illuminance Diagram [Lx/klm]



Polar Intensity Plot [cd/klm]



I dati indicati sono stati rilevati a CCT 4000K CRI > 90 @ 350mA, $T_c=80\text{ °C}$

LED driver choice table - Tabella di scelta driver

Article	Current	Power	Standard Driver		Standard Driver PFC > 0,9		Dimmable 1-10V & PUSH		Dimmable DALI	
			Article	Code	Article	Code	Article	Code	Article	Code
LED SPOT 1000	250	8,7	MP 15	122360	UNIVERSALE 20	122201	MINIJOLLY LC	123401-151401	MINIJOLLY DALI	125403-151403
			DCC 10W 250mA US	122358	UNIVERSALE LC	122203				
	300	10,6	MP 15	122360	UNIVERSALE LC	122203	MINIJOLLY LC	123401-151401	-	-
			DCC 15W 350mA US	122350	UNIVERSALE 20	122201	MINIJOLLY	125400-151400	MINIJOLLY DALI	125403-151403
350	12,5	MP 15	122360	UNIVERSALE LC	122203	MINIJOLLY LC	123401-151401			

Article	Code	Rated Voltage	P out W ⁽¹⁾	V out	dimension (mm)	\varnothing mm	Efficiency η (100 %) ⁽¹⁾	t_a °C	t_c °C	Power Factor λ	Dimmable
DCC 10W 250mA	122358	110-240	10	43	115x34x19	40	73	-25+50	75	0,6 C	NO
DCC 15W 350mA	122350	110-240	15 (10)	43	115x34x19	40	77	-25+45	75	0,6 C	NO
MP 15	122360	100-240	15 (10)	41,5	115x34x19	40	82	-25+50	75	0,6 C	NO
UNIVERSALE 20	122201	220-240	20	57	110x52x22	55	>88	-25+50	80	0,95	NO
UNIVERSALE 20 LC	122203	220-240	20	55	110x52x22	55	>87	-25+50	75	0,95	NO
MINIJOLLY	125400-151400	110-240	20	43	110x52x22	55	>87	-25+50	80	0,95	1...10V - PUSH
MINIJOLLY LC	123401-151401	110-240	20	43	110x52x22	55	>87	-25+45	75	0,95	1...10V - PUSH
MINIJOLLY DALI	125403-151403	110-240	20	43	110x52x22	55	>87	-25+45	75	0,95	DALI

⁽¹⁾ Referred to $V_{in} = 230\text{ V}$, 100% load - Riferito a $V_{in} = 230\text{ V}$, carico 100%

For additional technical informations please visit our website: www.tci.it